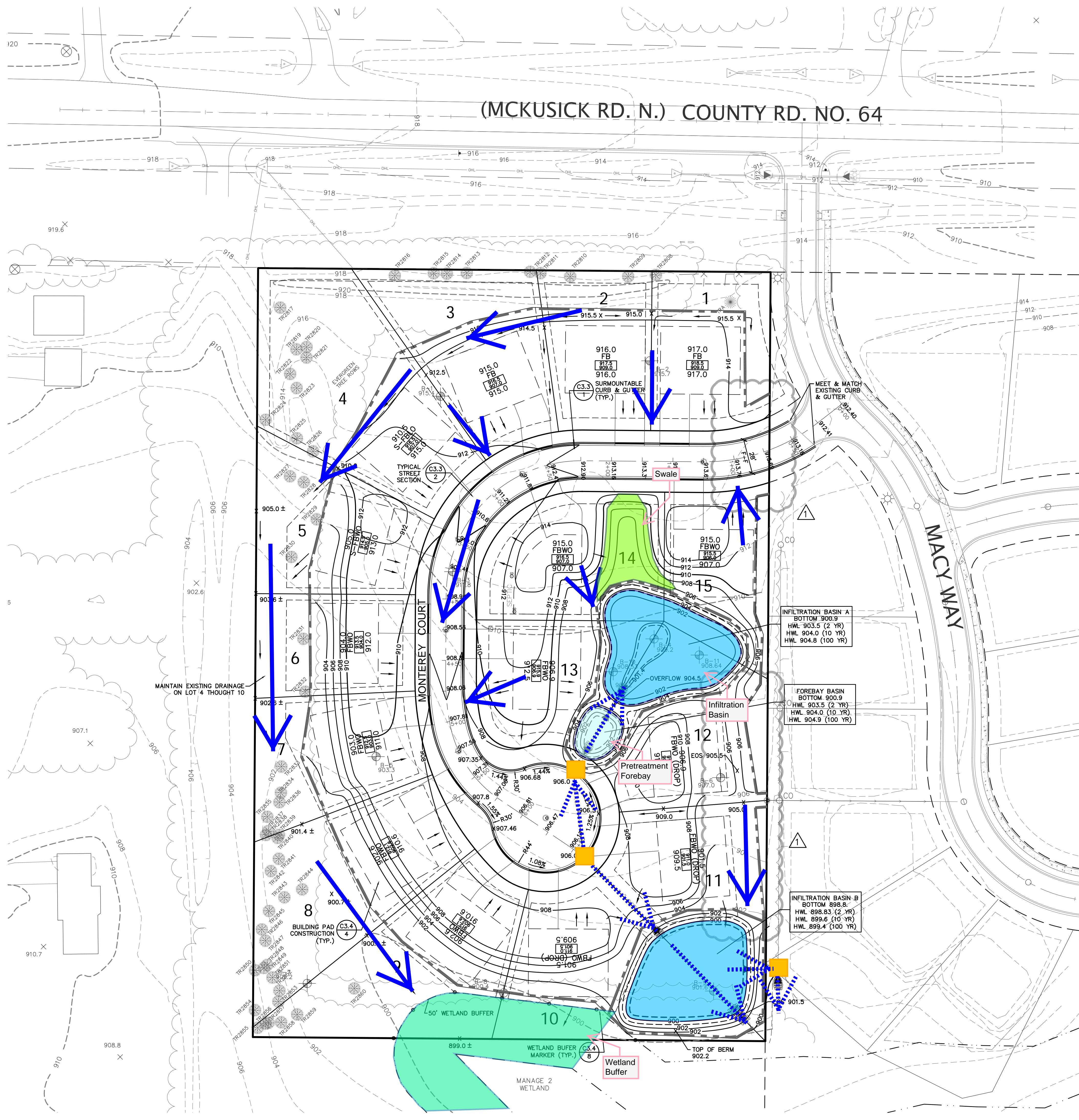
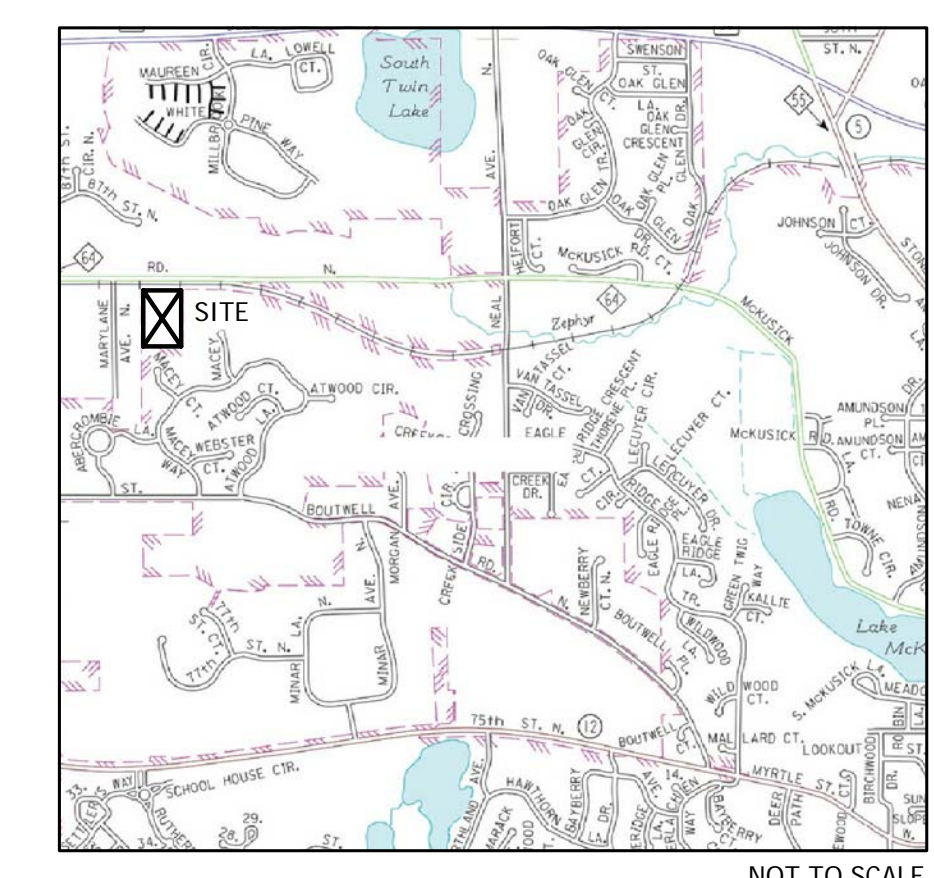


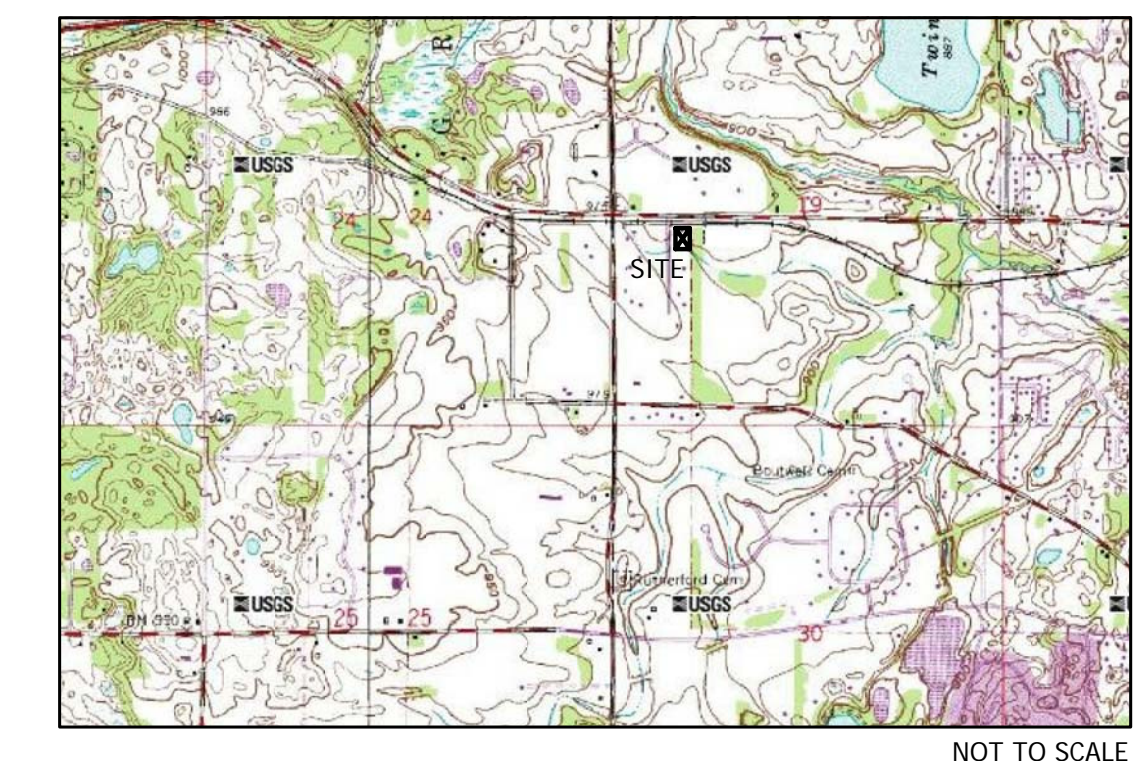
(MCKUSICK RD. N.) COUNTY RD. NO. 64



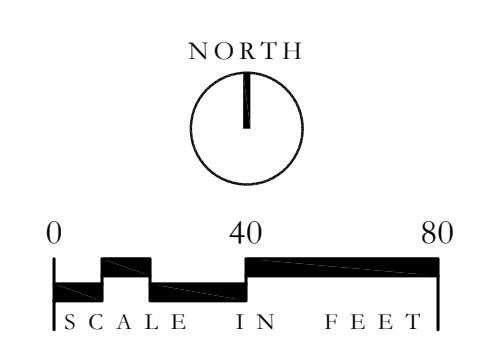
LOCATION MAP



USGS MAP



REFER TO SHEET C3.2 FOR EROSION CONTROL PLAN



OWNERS	
BROWNS CREEK WEST, LLC c/o JON WHITCOMB PO BOX 128 STILLWATER, MN 55082	
PROJECT	
BROWNS CREEK PRESERVE STILLWATER, MINNESOTA	
DRAWING	
CITY COMMENTS 08/07/13	
REVISION	
REVISION	DATE
PRELIMINARY PLAT SUBMITTAL	04/19/13
WATERSHED RE-SUBMITTAL	06/18/13
PERMIT/ BID/ FINAL PLAT	07/19/13
APPROVAL ISSUE	
CITY COMMENTS	08/07/13
SHEET INDEX	
C0.1	COVER SHEET
C1.1	EXISTING CONDITIONS
C2.1	PRELIMINARY PLAT
C3.1	GRADING PLAN
C3.2	EROSION CONTROL PLAN
C3.3	STREET PLAN & PROFILE
C3.4	GRADING DETAILS
C4.1	MASTER UTILITY PLAN
C4.2	SANITARY SEWER & WATERMAIN PLAN & PROFILE
C4.3	STORM SEWER PLAN & PROFILE
C4.4	UTILITY DETAILS
C4.5	UTILITY DETAILS
L1.1	TREE PERSERVATION PLAN
L2.1	LANDSCAPE PLAN
SWPPP1.1	SWPPP PLAN
CERTIFICATION	
I hereby certify that this plan was prepared by me, or under my direct supervision, and that I am a duly Licensed Professional Engineer under the laws of the State of MINNESOTA.	
Stephen M. [Signature] Date: 07/19/13	
Significant shown is a digital reproduction of original. Wet signed copy of this plan is on file and available upon request at RHO Development Consulting.	
P.O. BOX 357 LONG LAKE, MN 55356 PHONE: 612-382-4804	
SHEET	
GRADING PLAN	
PROJECT NO.	C3.1
WH104001	
FILE	C301WH101.DWG