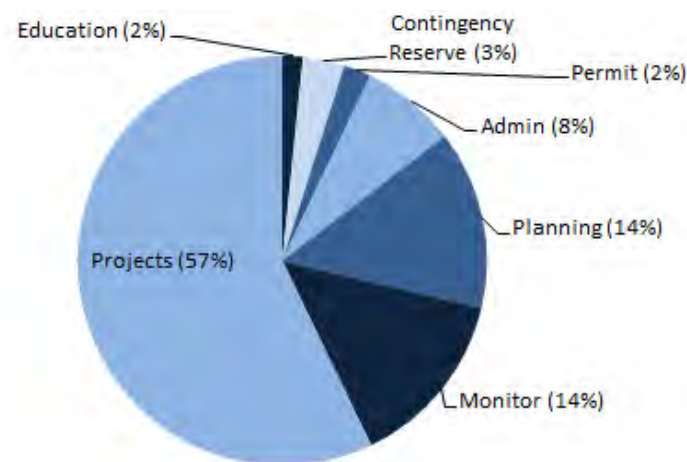


2014 & 2015 Budget

2014 Annual Report & 2015 Annual Plan

2015 Budget (as of April 2015)



Total Budget = \$1,743,911

Revenue:

- Permit Fees 2% = \$37,180
- Grants 14% = \$241,850
- Carry Over 36% = \$630,941
- Levy 48% = \$833,940

2014 Actual

Revenue: \$781,605

Expenses: \$962,815*

**Expenses exceeded revenue due to spending down previous years budgeted carry forward*

Brown's Creek Watershed District has leveraged over \$900,000 in state grant funding since 2010! Improving Brown's Creek, Long Lake, McKusick Lake, and the St. Croix River!



Brown's Creek Watershed District:

Working with the Community to Preserve and Improve the Quality of the District's Water and Natural Resources



(Left to Right) Managers Johnson, Pundsack, Taillon, Leiser, & Schwarze

The Brown's Creek Watershed District (BCWD) is the governmental unit with primary responsibility for protecting the water resources of the Brown's Creek Watershed. The District was established in 1997 under the Minnesota Watershed District Act. The District includes portions of the Cities of Oak Park Heights, Grant, Hugo, Lake Elmo, and Stillwater along with portions of May and Stillwater Townships. The upper portion of the District is largely rural with farms, large-lot development and undeveloped grassland, cropland and forestland dominant. The lower portion of the District includes rapidly developing urban areas within the Cities of Stillwater and Oak Park Heights.

BCWD Board of Managers

The BCWD's five Board of Managers are appointed by the Washington County Commissioners and can be contacted through the BCWD office.

Regular Board Meetings held at 6:30PM
Second Wednesday of the Month

- Craig Leiser, President**
- Sharon Schwarze, Vice-President**
- Gail Pundsack, Vice-President**
- Gerald Johnson, Secretary**
- Connie Taillon, Treasurer**

The District covers approximately 30 square miles within Washington County that drain into Brown's Creek, which then enters the St. Croix River. The watershed includes Brown's Creek—a DNR designated trout stream, and several small tributaries. Brown's Creek has been listed as impaired. A TMDL and implementation plan has been completed to identify ways to reduce total suspended solids and high temperatures to the creek.

The watershed includes twelve major lakes and numerous wetlands. Several of the lakes have been listed as impaired for excess nutrients, including Long, Goggins, North & South School Section and Lynch.

For More Information – Contact the District Administrator:

Karen Kill – 455 Hayward Ave N, Oakdale, MN 55128
651.330-8220 x26 or karen.kill@mnwcd.org

Or Visit Us at the Brown's Creek Watershed District Website: www.bcwd.org

District Consultants (selected in 2015 Biennial Solicitation):

Legal Services – Michael Welch - Smith Partners, P.L.L.P.
Old Republic Title Building, 400 Second Avenue South, Suite 1200, Minneapolis, MN 55401
612.344.1400 or welch@smithpartners.com

Engineering Services - Camilla Correll, P.E. - Emmons Olivier Resources, Inc. –
651 Hale Avenue, Oakdale, MN 55128 – 651.770.8448 or ccorrell@eorinc.com

2014 Participating Citizen Advisory Committee (CAC) Members included:

Marvin & Paulette Jones	Carol Parendo
Tom Henderson	Karen & Paul Richtman
Lee Miller	Carol Palmquist

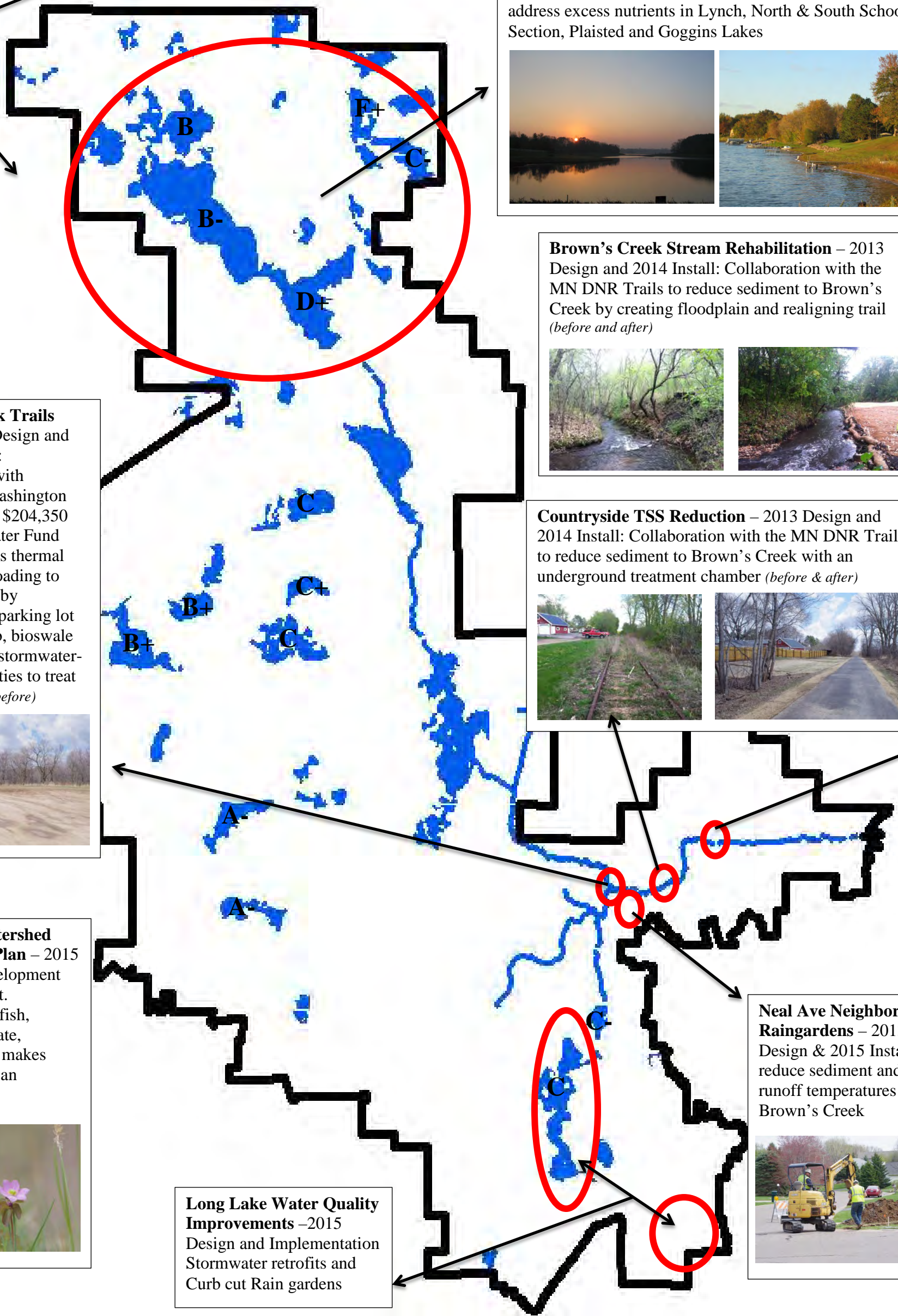
July 22, 2014 & September 3, 2014 - Joint BCWD Board and CAC Meeting to develop 2015 Budget and workplan and assessed the progress of the 2014 workplan.

Please contact the Administrator if you would like to serve on the CAC!

Take a look at the new Brown's Creek Watershed District website www.bcwd.org and like us on Facebook!



Highlights of 2014 Accomplishments & 2015 Planned Projects



2014-15 - Northern Chain Lakes Management Plan to address excess nutrients in Lynch, North & South School Section, Plaisted and Goggins Lakes

Brown's Creek Stream Rehabilitation – 2013 Design and 2014 Install: Collaboration with the MN DNR Trails to reduce sediment to Brown's Creek by creating floodplain and realigning trail (*before and after*)

Countryside TSS Reduction – 2013 Design and 2014 Install: Collaboration with the MN DNR Trails to reduce sediment to Brown's Creek with an underground treatment chamber (*before & after*)

Brown's Creek Trails Park – 2015 Design and 2016/17 Install: Collaboration with Stillwater & Washington County using a \$204,350 2015 Clean Water Fund Grant to address thermal and sediment loading to Brown's Creek by retrofitting the parking lot with a rock crib, bioswale and associated stormwater-treatment facilities to treat up to 6 acres. (*before*)

2017-2026 Watershed Management Plan – 2015 Begin plan development and public input. Inventory bird, fish, macroinvertebrate, plants...all that makes Brown's Creek an amazing place!

Long Lake Water Quality Improvements – 2015 Design and Implementation Stormwater retrofits and Curb cut Rain gardens

Neal Ave Neighborhood Raingardens – 2013 Design & 2015 Install to reduce sediment and runoff temperatures to Brown's Creek

2014 Lake Water Quality Report Card

Bass Lake East – B+ Goggin's – D+ Lynch North & South – F+/C- Plaisted – B Bass Lake West – B+ Kismet Basin – C Masterman – A-
 South School Section – B- Benz Lake – C Long – C Pat – C+ Wood Pile Lake – A-