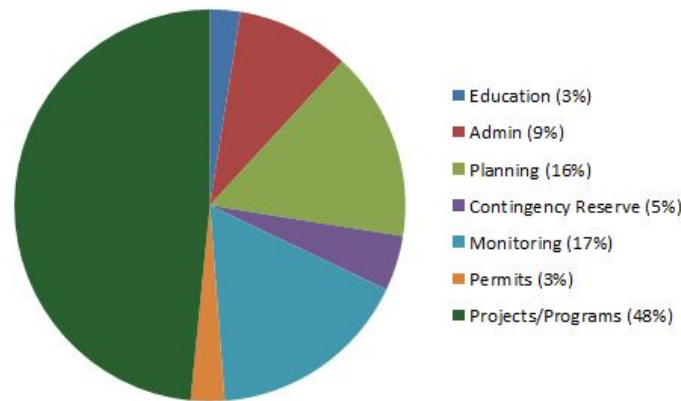


2015 & 2016 Budget

2015 Annual Report & 2016 Annual Plan

2016 Budget (as of April 2016)



Total Budget = \$1,413,700

Revenue:

Permit Fees 2% = \$30,000

Carry Over/Grants 33% = \$470,000

Levy 65% = \$913,700

2016 Projects Include:

- Brown's Creek Rock Crib (\$265K)
- Norell Ave Pond Retrofit (\$50K)
- Long Lake Neighborhood Raingardens (\$60K)

2015 Actual:

Revenue: \$962,462

Expenses: \$1,054,908*

**Expenses exceeded revenue due to spending down previous years budgeted carry forward*

2015 Permit Summary

- 16 Permit Approvals, including 1 Variance Request (Brown's Creek Cove Trail- located within buffer)
- 1 Notice of Probable Violation (Stillwater Readiness Center)
- No Violations

Brown's Creek Watershed District has leveraged over \$900,000 in state grant funding since 2010!

Improving Brown's Creek, Long Lake, McKusick Lake, & the St. Croix River!



Brown's Creek Watershed District:

Working with the Community to Preserve and Improve the Quality of the District's Water and Natural Resources



Brown's Creek WD goes the extra mile for outreach – 2017-2026 Plan Development

Established in 1997, the Brown's Creek Watershed District (BCWD) has primary responsibility for protecting the water resources in the 30 square miles of portions of the Cities of Oak Park Heights, Grant, Hugo, Lake Elmo, and Stillwater along with portions of May and Stillwater Townships. As early flooding issues have been resolved, BCWD has changed to taking an active role in protecting and restoring Brown's Creek, one of the few remaining designated trout streams in the Twin Cities. Over the course of the last 15 years, the BCWD transitioned from focus on a single-species to broader ecological health of the entire Brown's Creek corridor and the lakes, ponds and wetland that support the constant source of groundwater to this cold water fishery.

BCWD Board of Managers

The BCWD's five Board of Managers are appointed by the Washington County Commissioners and can be contacted through the BCWD office.

Regular Board Meetings held at 6:30PM
Second Wednesday of the Month

Craig Leiser, President
Sharon Schwarze, Vice-President
Gail Pundsack, Vice-President
Gerald Johnson, Secretary
Connie Taillon, Treasurer

In 2015, BCWD formally began the process of developing the next 10-year watershed management plan, capitalizing on events and promotional activities around the new Brown's Creek State Trail to get more people interested and involved in the events of the district. A series of events held in partnership with the DNR – including a nature photography workshop, a plant identification walk, and a bird walk – were used to reach different audiences and generate excitement about the work happening in the district. The events culminated in an ice cream social and open house held on June 16th with 200-plus people in attendance. District staff and board managers were on hand at each stop to answer questions and provide information.

These events were so fun and successful that residents will see more in 2016!

2015 Participating Citizen Advisory Committee (CAC) Members included:

Marvin & Paulette Jones	Rick Vanzwol
Larry Timmerman	Karen & Paul Richtman
Anne Miller	George Vania
Jyneen Thatcher	Brent Voight

May 20, 2015 & August 26, 2015 - CAC Meetings to provide input on the 2017-2026 Management Plan
July 15, 2015 & August 19, 2015 Board workshops to develop 2016 Budget and workplan and assessed the progress of the 2015 workplan.

For More Information – Contact the District Administrator:

Karen Kill – 455 Hayward Ave N, Oakdale, MN 55128
651.330-8220 x26 or karen.kill@mnwcd.org

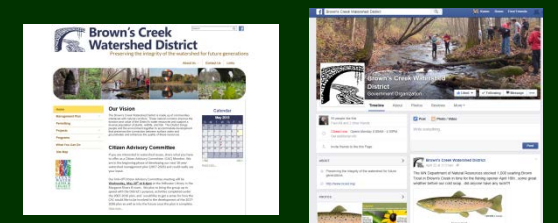
Or Visit Us at the Brown's Creek Watershed District Website: www.bcwd.org

District Consultants (selected in 2015 Biennial Solicitation):

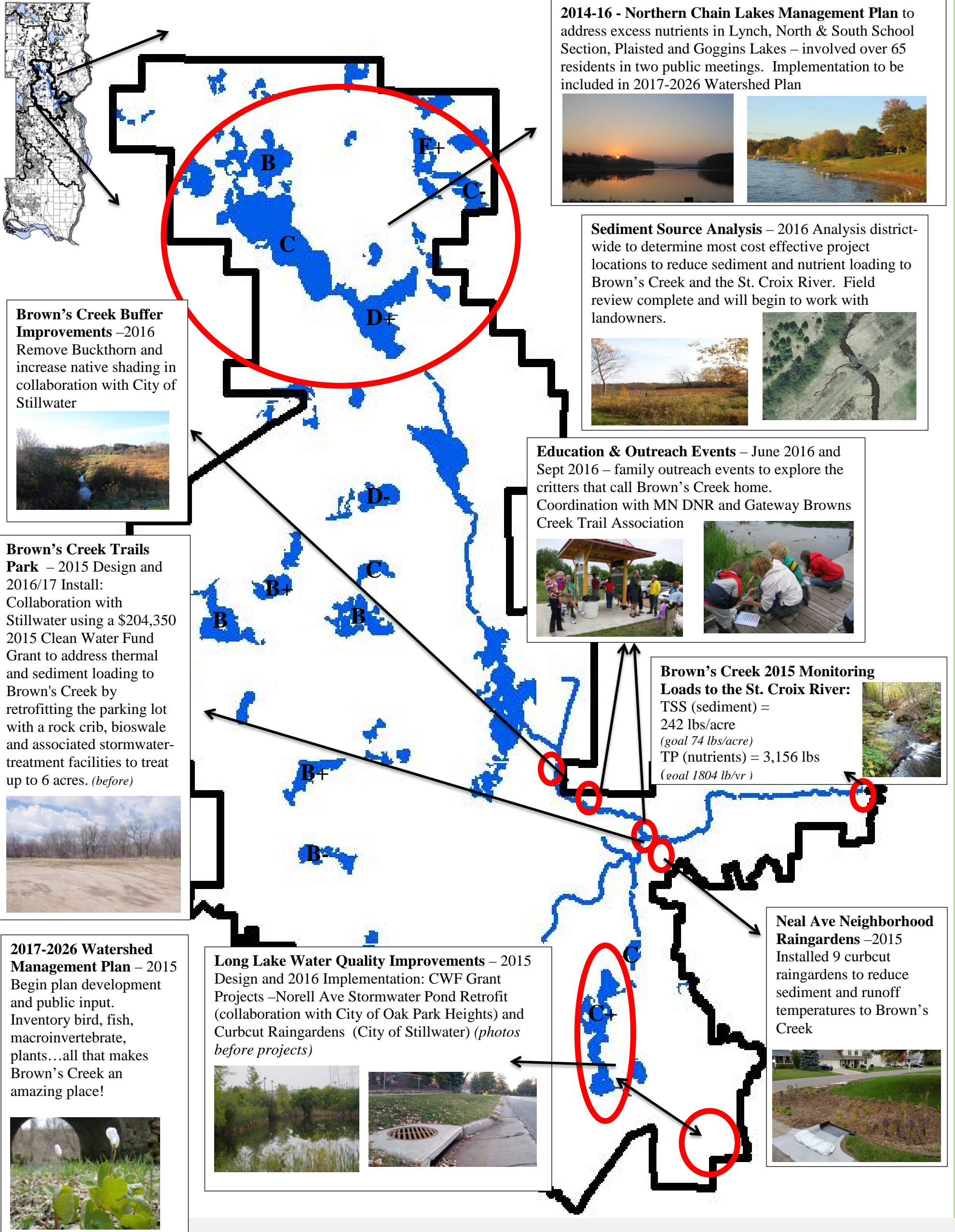
Legal Services – Michael Welch – Smith Partners PLLP
400 Second Ave S, Suite 1200, Minneapolis, MN 55401
612.344.1400 welch@smithpartners.com

Engineering Services – Camilla Correll, PE – EOR, Inc.
651 Hale St. N, Oakdale, MN 55128 651.770.8448 or ccorrell@eorinc.com

Take a look at the new Brown's Creek Watershed District website www.bcwd.org and like us on Facebook!



Highlights of 2015 Accomplishments & 2016 Planned Projects



2014-16 - Northern Chain Lakes Management Plan to address excess nutrients in Lynch, North & South School Section, Plaisted and Goggins Lakes – involved over 65 residents in two public meetings. Implementation to be included in 2017-2026 Watershed Plan



Sediment Source Analysis – 2016 Analysis district-wide to determine most cost effective project locations to reduce sediment and nutrient loading to Brown's Creek and the St. Croix River. Field review complete and will begin to work with landowners.



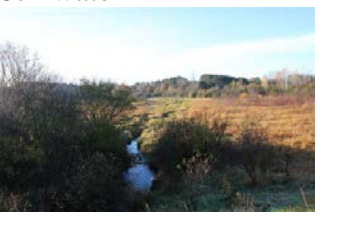
Education & Outreach Events – June 2016 and Sept 2016 – family outreach events to explore the critters that call Brown's Creek home. Coordination with MN DNR and Gateway Browns Creek Trail Association



Brown's Creek 2015 Monitoring Loads to the St. Croix River:
 TSS (sediment) = 242 lbs/acre (goal 74 lbs/acre)
 TP (nutrients) = 3,156 lbs (goal 1804 lb/vr)



Brown's Creek Buffer Improvements –2016 Remove Buckthorn and increase native shading in collaboration with City of Stillwater



Brown's Creek Trails Park – 2015 Design and 2016/17 Install: Collaboration with Stillwater using a \$204,350 2015 Clean Water Fund Grant to address thermal and sediment loading to Brown's Creek by retrofitting the parking lot with a rock crib, bioswale and associated stormwater-treatment facilities to treat up to 6 acres. (before)



2017-2026 Watershed Management Plan – 2015 Begin plan development and public input. Inventory bird, fish, macroinvertebrate, plants...all that makes Brown's Creek an amazing place!



Long Lake Water Quality Improvements – 2015 Design and 2016 Implementation: CWF Grant Projects –Norell Ave Stormwater Pond Retrofit (collaboration with City of Oak Park Heights) and Curbcut Raingardens (City of Stillwater) (photos before projects)



Neal Ave Neighborhood Raingardens –2015 Installed 9 curbcut raingardens to reduce sediment and runoff temperatures to Brown's Creek



2015 Lake Water Quality Report Card

Bass Lake East – B+ Goggin's – D+ Lynch North & South – F+/C- Plaisted – B Bass Lake West – B Kismet Basin – B Masterman – B+
 South School Section – C Benz Lake – D- Long – C+ Pat – C Wood Pile Lake – B-