

Project Name | Multiple Projects: Vegetative Maintenance**Date** | 3/02/2023**To / Contact info** | BCWD Board of Managers**Cc / Contact info** | Karen Kill, District Administrator**From / Contact info** | Pat Conrad; Ryan Fleming, PE; Mike Majeski**Regarding** | 2023 Vegetative Maintenance Scope of Services

Background

Brown's Creek Watershed District has committed to conducting maintenance on vegetation at a number of sites throughout the watershed. The maintenance is conducted to preserve existing high value naturally occurring native vegetation (as is the case for the Grant Fen), to assist in the establishment of native vegetation of recently constructed projects (Brown's Creek Trail, Long Lake Shoreline, Morgan Ave. Sand Filter), or to control invasive and woody vegetation that has sprouted up at previously constructed project sites (THPP and Kismet Basin).

Scope of Services

The following summarizes the work proposed at each project site for 2023. The maintenance work will be conducted by Natural Shores Technologies as a subcontractor to Emmons and Olivier Resources. Refer to attached map for site locations.

Grant Fen 2023 Maintenance Estimate

Spring Mowing

3-4 maintenance visits throughout season including:

- Spot herbicide treatments of reed canary grass, thistle, and other non-native weeds
- Regular weed whipping or mowing to prevent weeds from going to seed
- Re-seeding areas with on-site seed sources
- Buckthorn or other undesirable tree removal (ex. Amur maple)

Long Lake Shoreline 2023 Maintenance

Spring Mowing

3-4 maintenance visits throughout season including:

- Spot herbicide treatments of Reed Canary Grass, Thistle, Cattail, and other non-native weeds
- Regular weed whipping or mowing to prevent weeds from going to seed
- Buckthorn or other undesirable tree removal (ex. Amur Maple)
- Re-seed or re-plant areas where weeds have been removed in sections

Brown's Creek Trail 2023 Maintenance

Spring Mowing

3-4 maintenance visits throughout season including:

- Spot herbicide treatments of reed canary grass, thistle, sweet clover, and other non-native weeds
- Regular weed whipping or mowing to prevent weeds from going to seed
- Re-seed or re-plant areas where weeds have been removed

THPP 2023 Maintenance

Spring Scouting/Assessment

3-4 maintenance visits throughout the season including:

- Spring and fall spot herbicide treatments of reed canary grass, purple loosestrife, Canada thistle, and other invasive weed species
- Regular weed whipping or mowing to prevent weeds from going to seed

Morgan Ave. Sand Filter 2023 Maintenance

Spring Mowing

4-5 maintenance visits throughout the season including:

- 2 herbicide treatments (minimum)
- Prevention of seed maturation by hand pulling or weed whipping
- Removal of volunteer tree species

Kismet Basin 2023 Maintenance

Spring Mowing

3-4 maintenance visits throughout the season including:

- Spring and fall spot herbicide treatments of reed canary grass, spotted knapweed, and other invasive weeds
- Regular weed whipping or mowing to prevent weeds from going to seed

Site Progress Reports - \$1,000

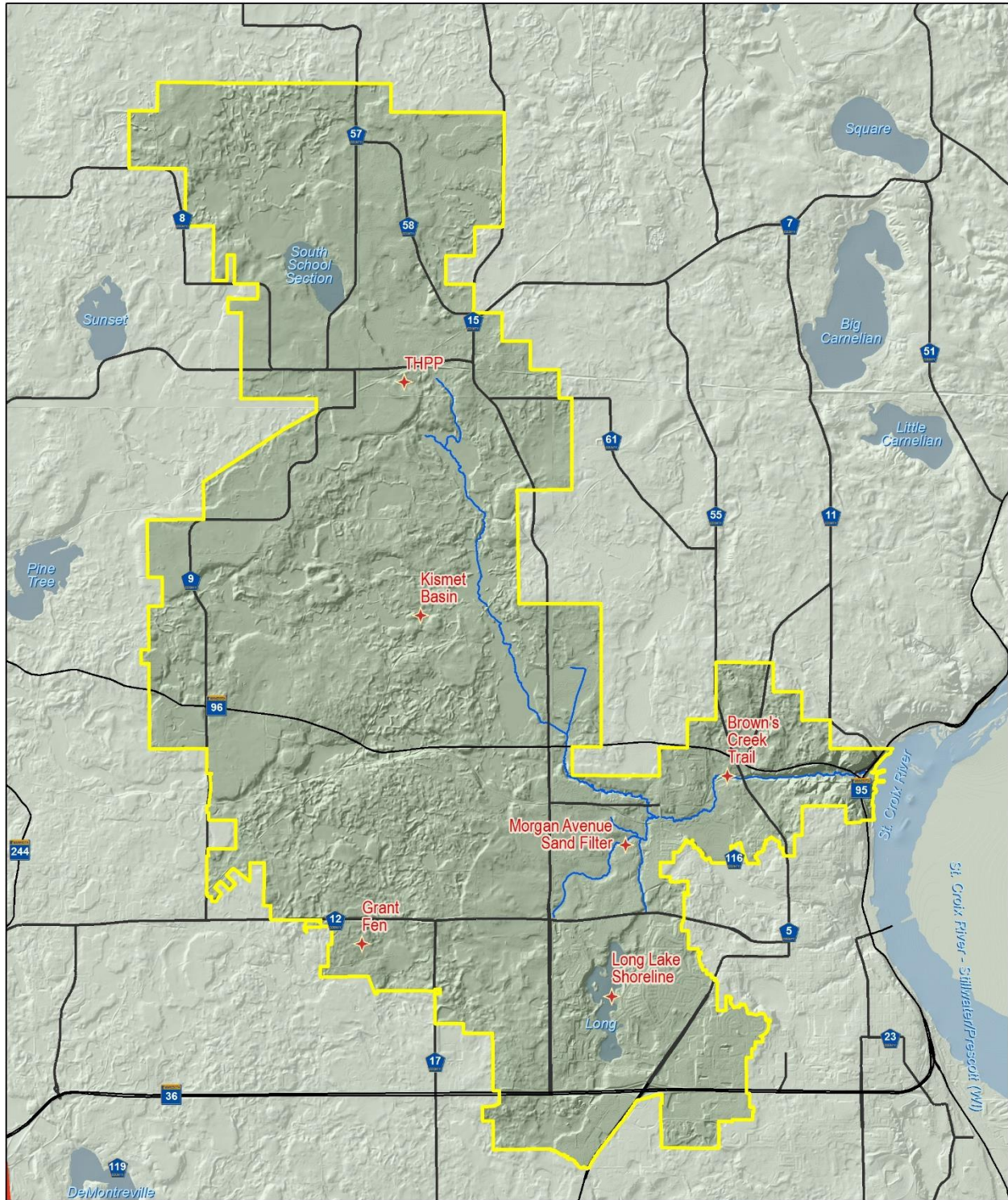
- Detailed progress reports for each site
- Completed in the fall by the end of November
- Including maintenance recommendations for 2024

Requested Action

Approve vegetative maintenance for the projects as follows:

Project	Cost	Account Number
Brown's Creek Trail	\$1,980	948-0000
Long Lake Shoreline	\$2,600	948-0000
THPP	\$3,700	948-0000
Kismet	\$2,250	948-0000
Morgan Avenue Sand Filter	\$1,840	948-0000
Grant Fen	\$3,000*	953-0000
Site Progress Reports	\$1,000	953-0000
TOTAL	\$16,370	NA

** Includes \$500 contractor coordination time*



Legend	
	Jurisdiction 2017
	Site
	Lake, Pond or Reservoir
	River or Stream (polygon)



**BCWD
Vegetation
Maintenance Site**

Miles
0 1

Emmons & Olivier Resources, Inc. is an Equal Opportunity Affirmative Action Employer