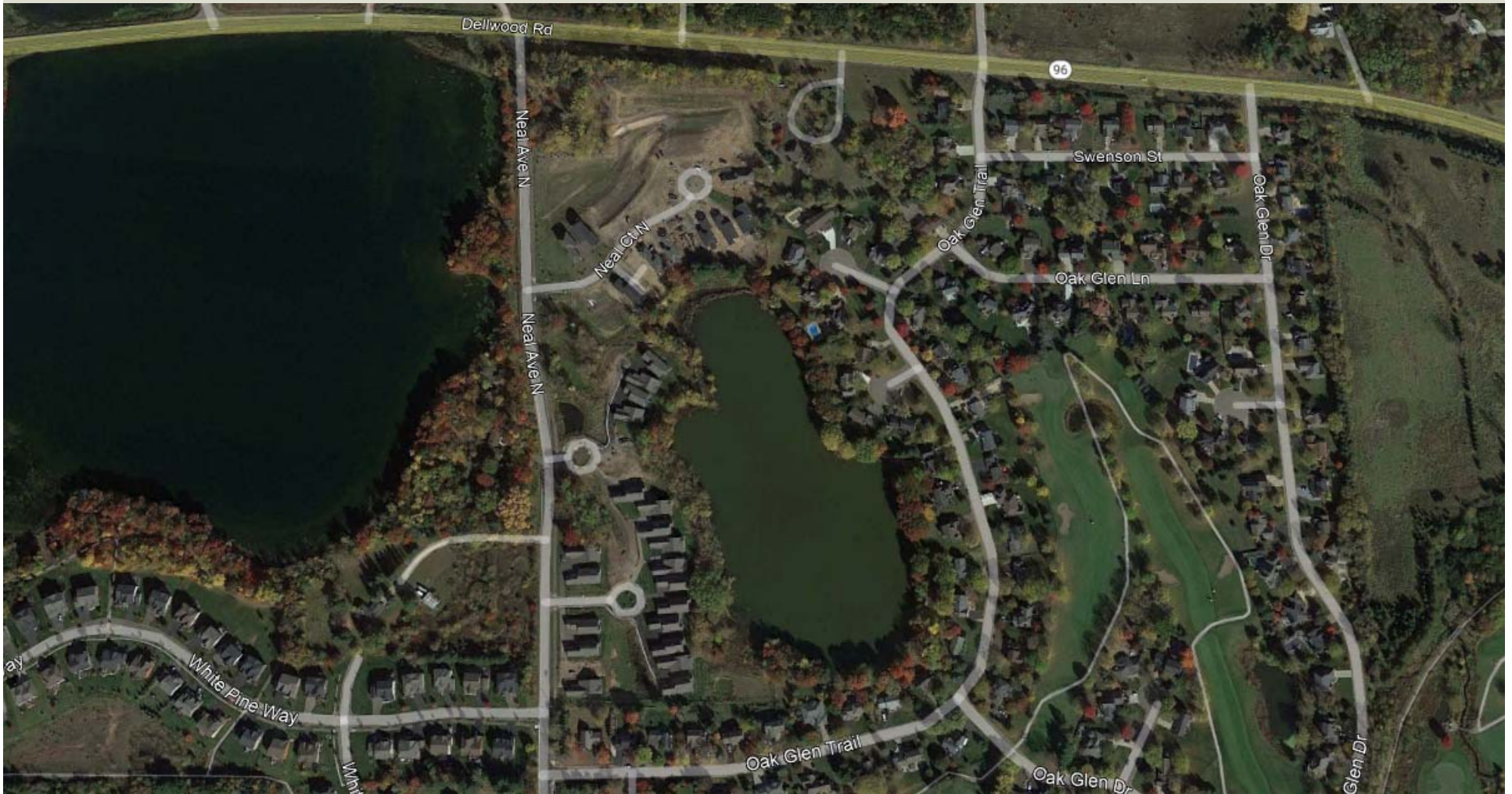


Stormwater Permitting at Heifort Pond



Heifort Pond Watershed

- 59 acres
 - Outlets through storm sewer at SE corner of lake
 - OHWL: 884.0'
 - Overflow elevation: 885.3'
 - 100-year HWL: 887.4'*
- *highly dependent on starting water level*

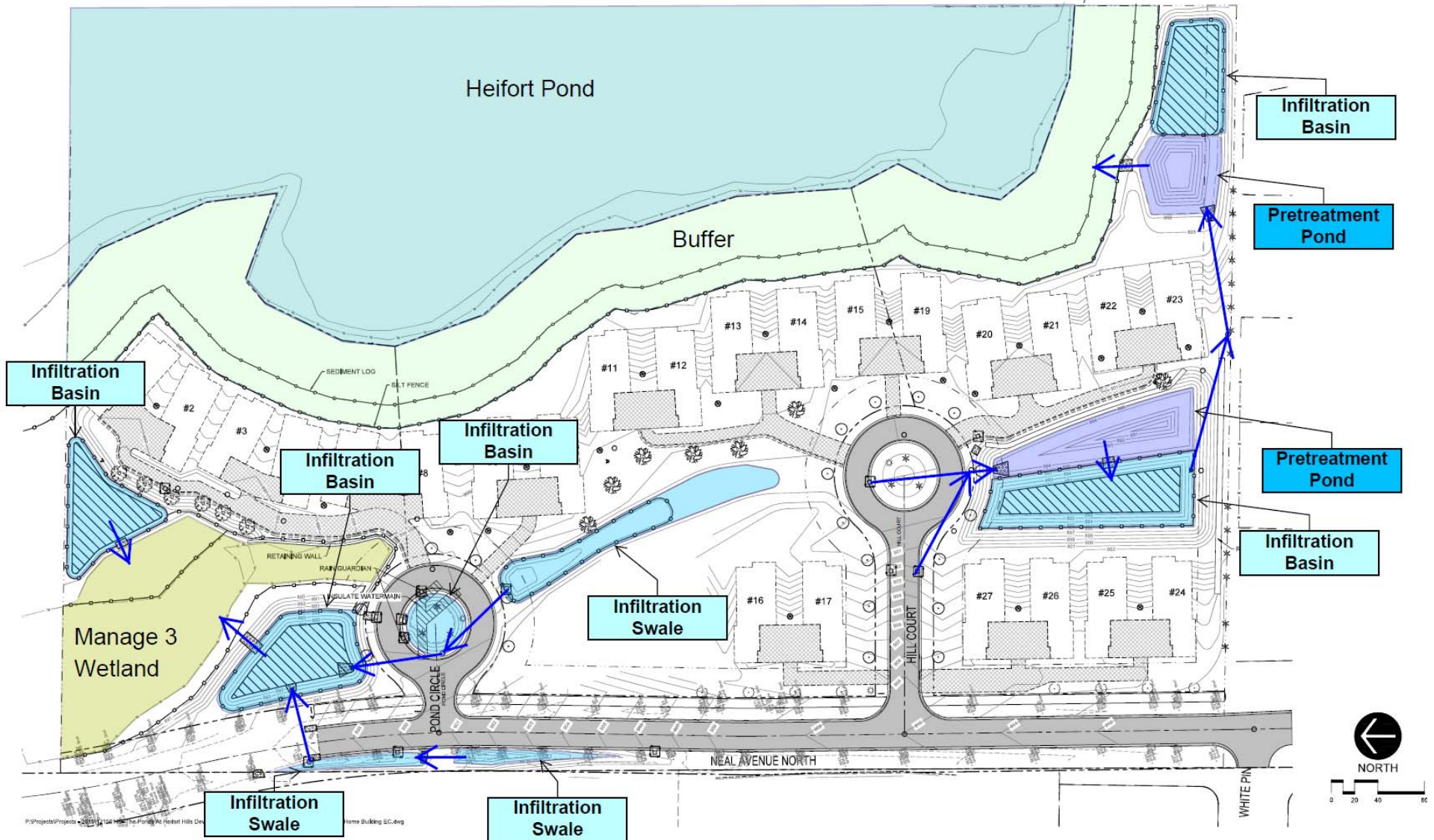


Stormwater Rule Overview

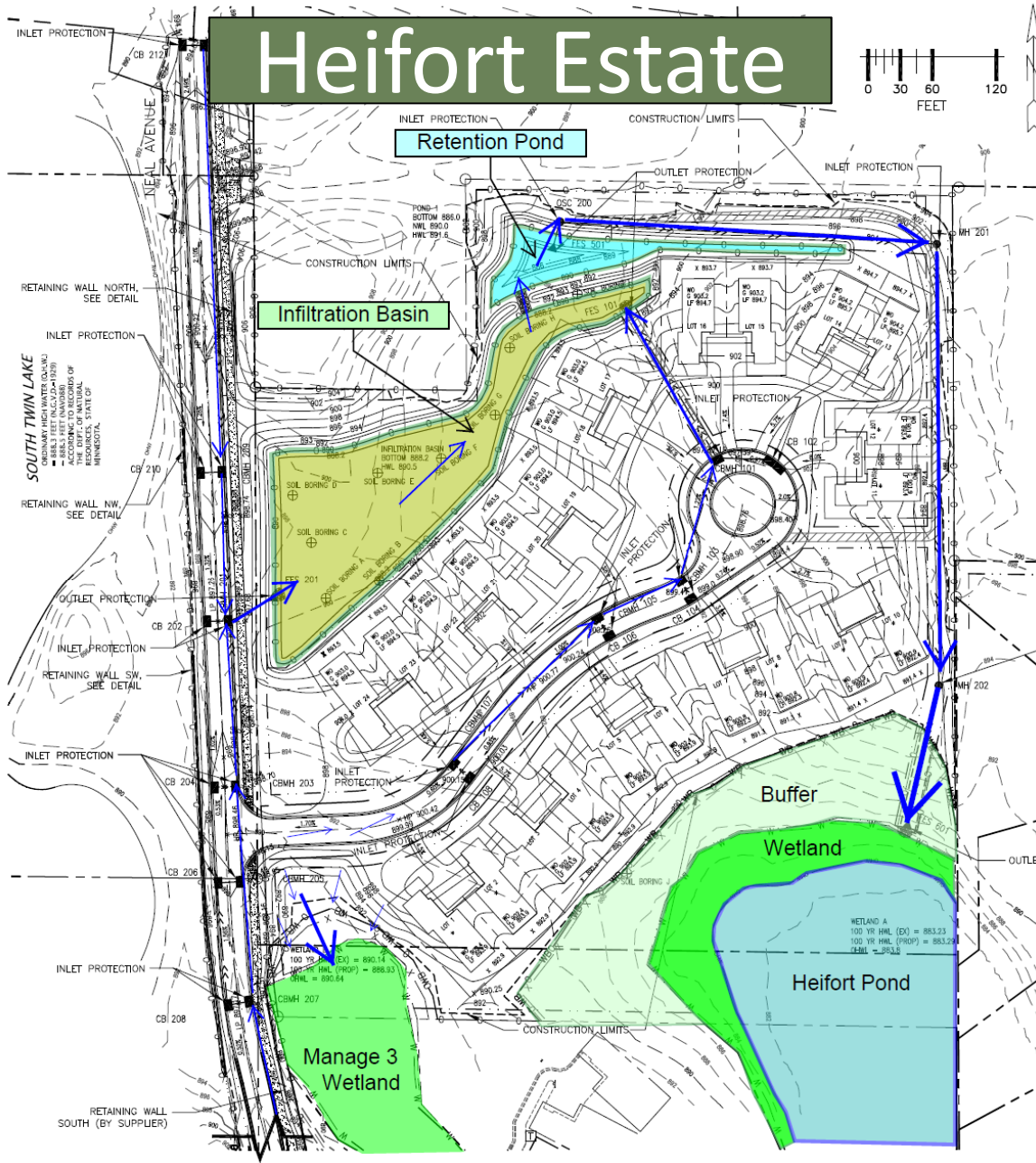
- Rate Control – *match pre-settlement conditions*
- Volume Control – *match pre-settlement conditions*
- Phosphorus Loading – *match existing conditions*
- Pond Bounce – *increase HWL by no more than 6”*
- Pond Drawdown – *increase drawdown by*
 - *No more than 1 day (2-yr storm) or*
 - *No more than 2 days (10-year storm or larger)*



The Ponds at Heifort Hills



Heifort Estate



Permitting Status

- The Ponds at Heifort Hills
 - Final vegetation establishment on remaining lots
 - Soils investigation on northwest infiltration basin
 - Review stormwater as-builts
 - Ongoing buffer improvements
- Heifort Estate
 - Final vegetation establishment on remaining lots
 - Buffer restoration and management

