

**Emmons & Olivier Resources, Inc.**  
we care for the earth and its inhabitants

## AGENDA

- **Watershed Management Plan**
  - Updating the Plan
  - Who's involved in the Plan update?
  - What to expect for 2024
  
- **Enhanced Stakeholder Engagement Plan**
  - Goals for enhanced stakeholder engagement
  - Who has participated in the past?
  - Who are we trying to engage now?
  - What does the EJ Screening Tool tell us?
  - Stakeholder Mapping Exercise
  - Activity with the CAC

## What is a Watershed Management Plan?

- **10-year Operating Plan**
  - Issues
  - Goals
  - Implementation activities (i.e., projects)
  - Description of programs
- **Who's involved in developing the Plan?**
  - Board of Managers
  - District Staff
  - Technical Advisory Committee
  - Citizens Advisory Committee
  - Stakeholders



1. **Stormwater Runoff Management** - Improve the quality and quantity of stormwater runoff to reduce impacts (e.g. pollutant loadings, loss of groundwater recharge, alterations to wetland hydrology) to downstream waterbodies.
2. **Erosion Prevention and Sediment Control** - Protect the District's water bodies from the impacts of sedimentation, excessive streambank and shoreline erosion, and adjacent upland erosion.
3. **Stream Management** - Improve the water quality and ecological integrity of Brown's Creek and its tributaries.
4. **Lake Management** - Restore the water quality of degraded lakes and protect the water quality in lakes that meet state water quality standards.
5. **Wetland Management** - Maintain or improve the quality of the watershed's wetland systems.
6. **Floodplain Management** - Protect and manage flood storage areas to reduce impacts of flooding and promote groundwater recharge.
7. **Groundwater Management** - Protect the quantity and quality of groundwater to maintain baseflow to the Brown's Creek watershed's groundwater dependent natural resources.
8. **Ecological Health** - Promote the ecological integrity and connectivity of the Brown's Creek watershed's ecosystems.
9. **Monitoring & Data Collection** - Collect high quality monitoring data that can be used to support cost-effective management decisions & evaluate performance in achieving the goals of this Plan.
10. **Regulations** - Maintain a clear and effective permitting program to protect the District's surface water and groundwater resources.
11. **Climate Change Adaptation** - Develop a better understanding of climate change, its impact to the District's land and water resources, and adaptive management strategies to address this emerging issue.
12. **Recreation** - Manage the watershed's natural resources to enhance their recreational value.
13. **Education, Outreach and Stewardship** - Provide education and outreach services to all audiences to promote good stewardship of the water and natural resources.
14. **Land Conservation** - Identify and pursue opportunities to preserve and restore land in the watershed to protect the quality of downstream resources.
15. **Funding** - Maintain a tax levy that is adequate to conduct the activities of the District but minimizes impact to taxpayers.

## What did the 2017-2026 Plan address?

- 15 issue categories
- Accomplishments include:
  - Projects
    - *Brown's Creek Tributary Restoration Project*
    - *Applewood Hills Golf Course Reuse Project*
    - *Oak Glen/McKusick Wetland Reuse Project*
  - Acquisition of 110<sup>th</sup> Street Property
  - On-going stream, lake and groundwater monitoring initiatives
  - Development of Lake Management Plans
  - Workshop addressing the evaluation of impacts related to climate change
  - Evaluation of the District's role in flood management



## What will the 2027-2036 WMP address?

- **Climate Adaptation and Resilience**
  - **Environmental Equity**
  - **Cultural history**
  - **Chloride management**
  - **Sustainability and co-benefits**
- 
- **Incorporating what we learned from planning efforts completed within the last 10 years such as:**
    - *Pond and Lake Management Plans*
    - *Marketplace Stormwater Harvest and Reuse*



## How will the CAC be involved in the planning process?

- **Help to identify and define the issues, goals and actions**
  - May need additional CAC meetings in 2024 – stay tuned.
  - Help identify others in your neighborhood, community, network that have something to contribute to the planning process
  - Talk about the plan – help raise awareness
  - Review and provide feedback on DRAFT plan content

## Goals for Enhanced Stakeholder Engagement

- **Gain a better understanding of who lives, works and recreated in the watershed**
- **Promote awareness of the BCWD and its programs to a broader audience**
- **Increase engagement with members of the community who aren't typically represented**
- **Explore the needs of others to improve delivery of services and identify opportunities to design projects that provide more (co-benefits) than stormwater management, for little to no cost**

## Who has participated in the past?

- **People experiencing direct impacts**
  - People experiencing flooding
  - Lakeshore owners
- **Older, close to retirement-age**
- **Higher income**
- **Good grasp of the subject matter**

## Who are we trying to engage now?

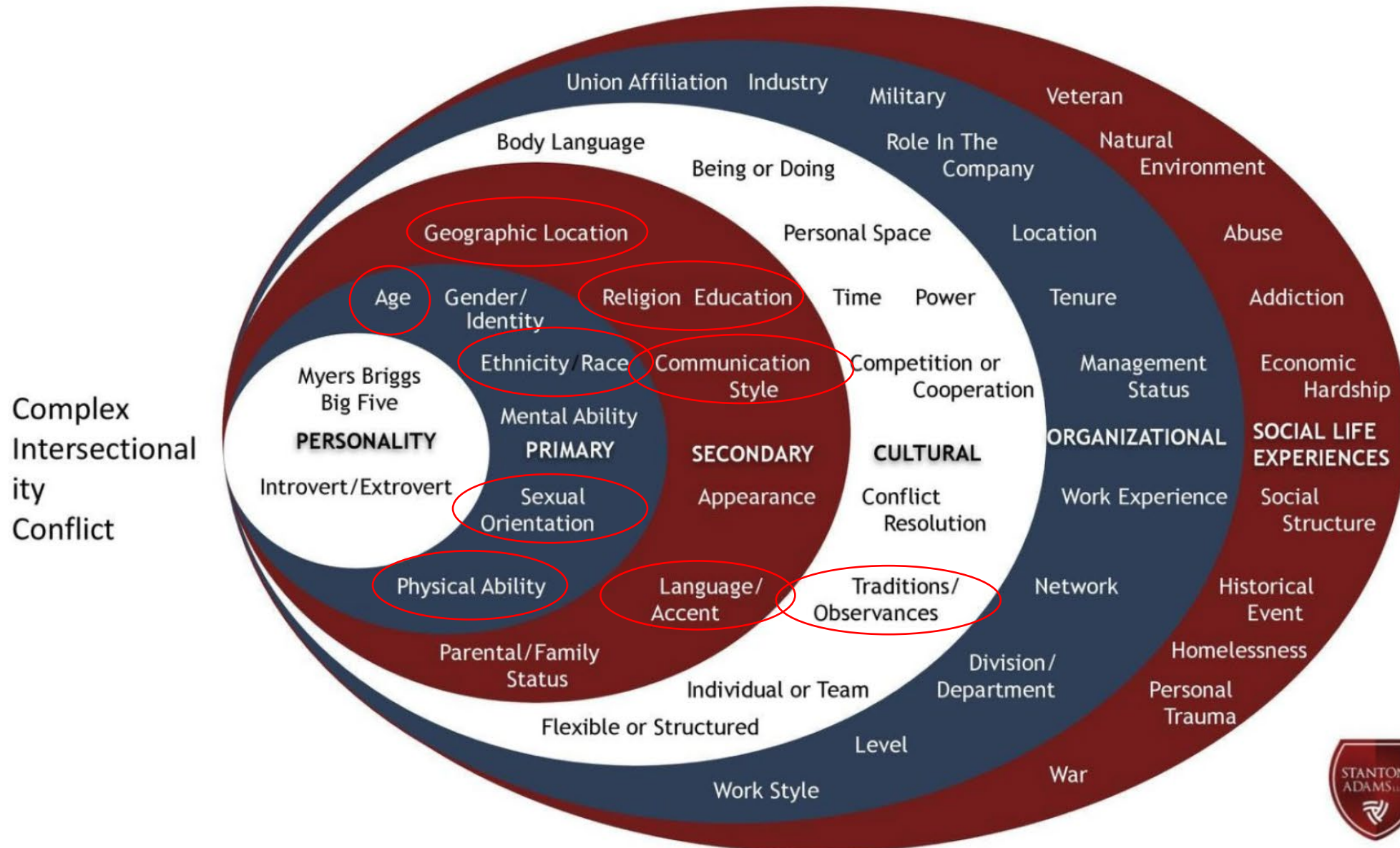
- **A more diverse audience**
- **People with different world-views**
- **People with different needs**



## Identifying Community Partners

- **Boots on the ground canvassing**
  - Utilize an approach strategy and standardized narrative to ensure all contacts disseminate and gather the desired information
    - *Identify demographics of the group*
    - *Leverage connections to discover new points of contact with other communities*
    - *Build relationships between the District that the community it serves*
  - **Goal:** to understand what various groups know about the BCWD and the activities the BCWD performs to enhance the watershed for their benefit and enjoyment
  - Interview responses will be summarized and used to expand upon the stakeholder map.

## DEI AWARENESS RECOGNIZES ALL THE WAYS WE ARE DIFFERENT

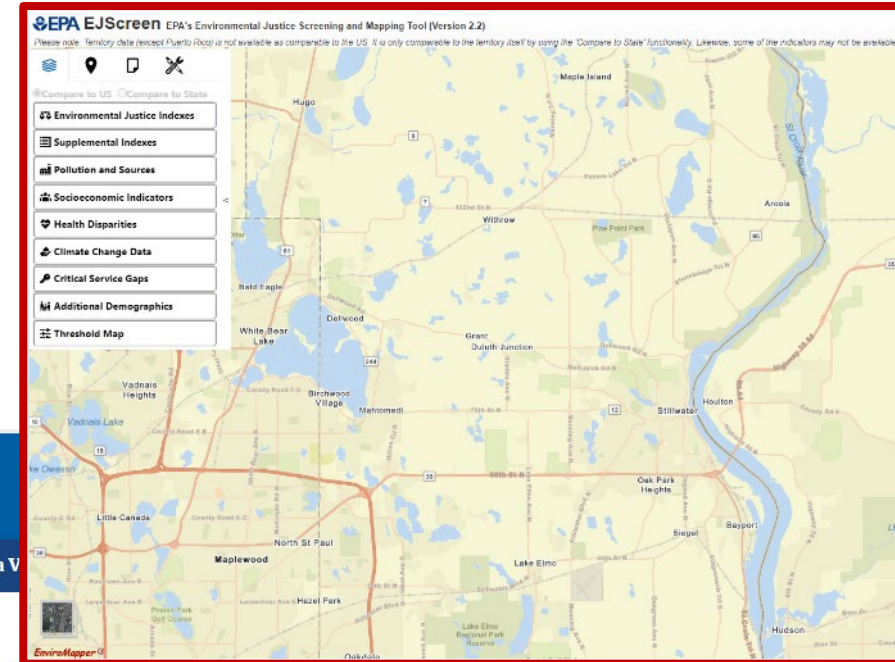


# Enhanced Stakeholder Engagement

Characteristics/Indicators	How might these differences inform how the BCWD does things?	Potential Outcomes
Age	May inform concerns, priorities, opportunities.	
Ethnicity / Race	Brings a different world view / cultural perspective to the table.	
Physical Ability	Informs how we are displaying information (i.e., signage), accessibility of meetings, projects and/or events, etc.	
Sexual Orientation	May inform communications and messaging.	Communication content / styles
Geographic Location	Is everyone participating from the same part of the watershed, or do they represent the same type of land use?	
Religion	Currently schedule events around Christian holidays. Improve scheduling by recognizing all holidays.	Increased participation / potential volunteer groups
Education	How we communicate information. What information is communicated.	
Communication Style	How we communicate information. What information is communicated.	
Language / Accent	How we communicate information. What information is communicated.	
Traditions / Observances	Currently schedule events around Christian holidays. Improve scheduling by recognizing all holidays.	Increased participation
Organizational Diversity	Who are we asking to provide feedback. Explore asking people for different work experiences for feedback.	New perspectives / ideas
Mental Acuity	How are we communicating – how technical is the information we are sharing? How quickly are we communicating to people?	Communication content / styles
Income Level	When are people working / when are we trying to engage with them?	Increased participation

## What is EJScreen Tool?

- Mapping Tool
- Includes Environmental and Social Indicators/Indexes that can be turned on and off
- Reports can be generated for areas
  - Manually drawn or imported shapefiles



Environmental Topics ▾ Laws & Regulations ▾ Report a V

## EJScreen: Environmental Justice Screening and Mapping Tool

**Launch the EJScreen Tool**

Explore EPA's environmental justice screening and mapping tool

# Environmental & Social Indicators

Compare to US  Compare to State

**Environmental Justice Indexes**

- Particulate Matter 2.5
- Ozone
- Diesel Particulate Matter
- Air Toxics Cancer Risk
- Air Toxics Respiratory HI
- Toxic Releases to Air
- Traffic Proximity
- Lead Paint
- Superfund Proximity
- RMP Facility Proximity
- Hazardous Waste Proximity
- Underground Storage Tanks
- Wastewater Discharge

Supplemental Indexes

Pollution and Sources

Socioeconomic Indicators

Health Disparities

Climate Change Data

Critical Service Gaps

Additional Demographics

Threshold Map

Compare to US  Compare to State

**Environmental Justice Indexes**

Supplemental Indexes

**Pollution and Sources**

- Particulate Matter 2.5
- Ozone
- Diesel Particulate Matter
- Air Toxics Cancer Risk
- Air Toxics Respiratory HI
- Toxic Releases to Air
- Traffic Proximity
- Lead Paint
- Superfund Proximity
- RMP Facility Proximity
- Hazardous Waste Proximity
- Underground Storage Tanks
- Wastewater Discharge

Socioeconomic Indicators

Health Disparities

Climate Change Data

Critical Service Gaps

Additional Demographics

Threshold Map

Compare to US  Compare to State

**Environmental Justice Indexes**

Supplemental Indexes

Pollution and Sources

Socioeconomic Indicators

Health Disparities

Climate Change Data

**Critical Service Gaps**

- Broadband Gaps
- Lack of Health Insurance
- Housing Burden
- Transportation Access
- Food Desert

Additional Demographics

Threshold Map

Compare to US  Compare to State

**Environmental Justice Indexes**

Supplemental Indexes

Pollution and Sources

**Socioeconomic Indicators**

- Demographic Index
- Supplemental Demographic Index
- People of Color
- Low Income
- Unemployment Rate**
- Limited English Speaking
- Less Than High School Education
- Under Age 5
- Over Age 64

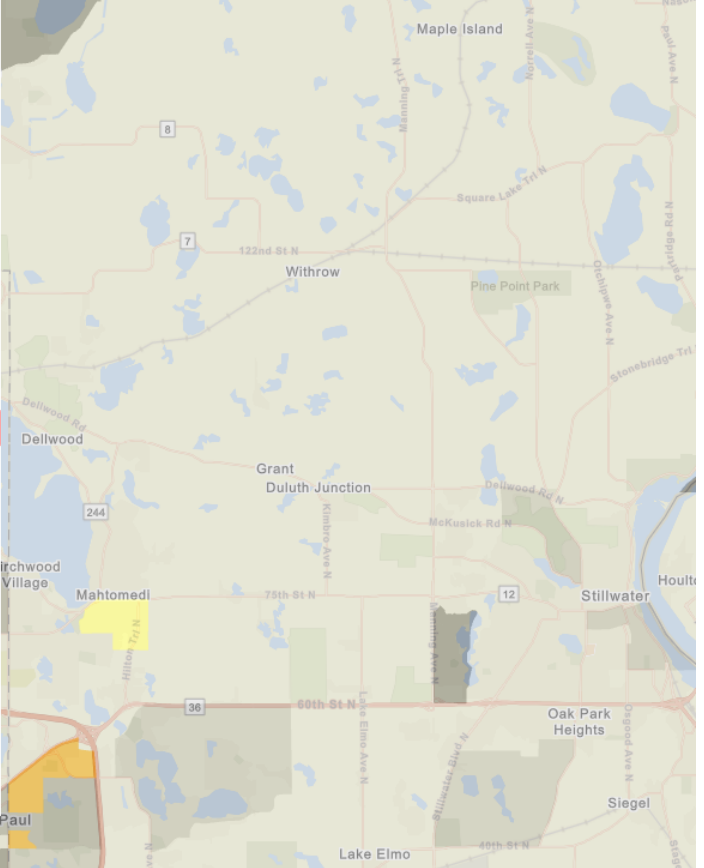
Health Disparities

Climate Change Data

Critical Service Gaps

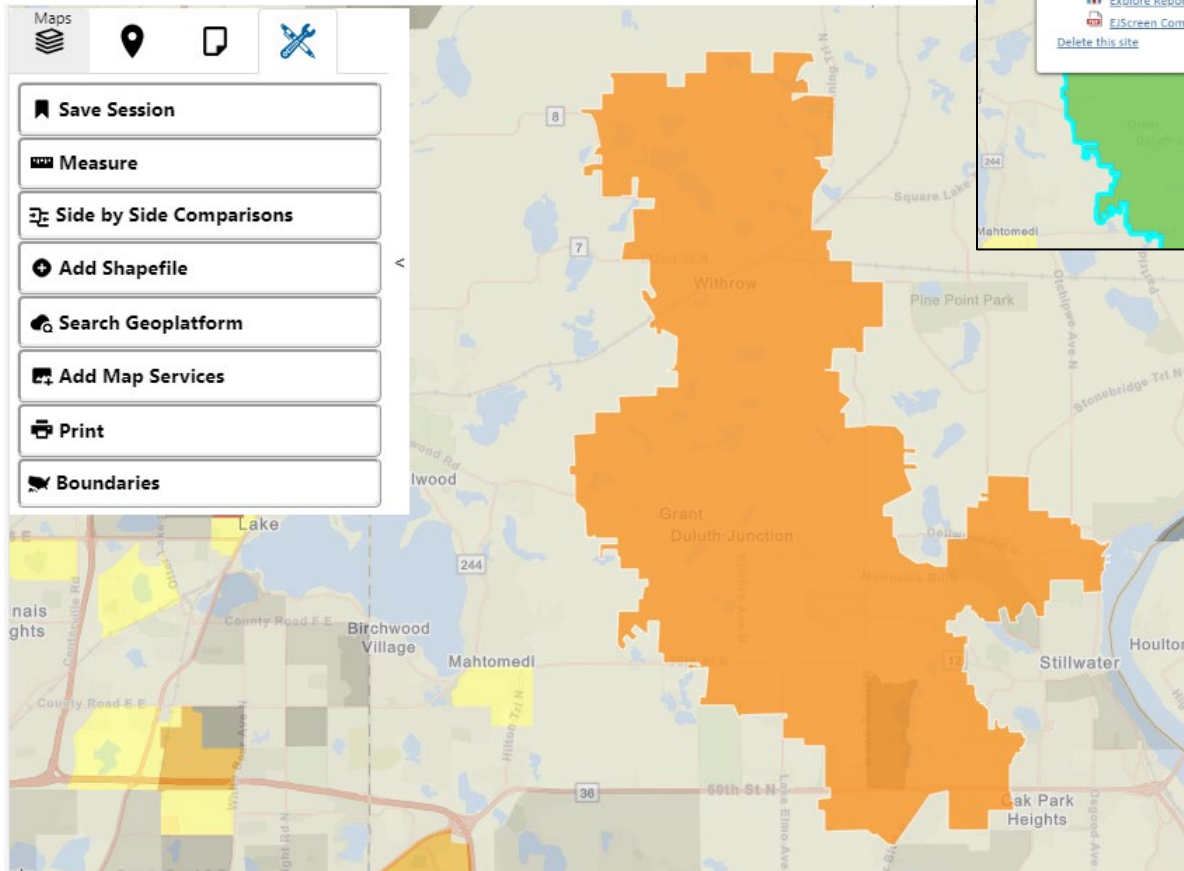
Additional Demographics

Threshold Map

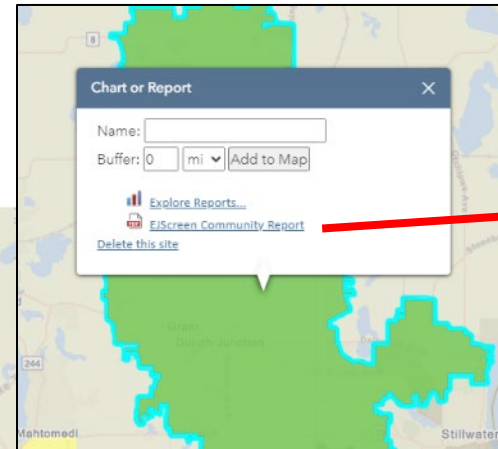


# Report Generation by Area

Define Areas and produce reports



BCWD Shapefile



## EJScreen Community Report

This report provides environmental and socioeconomic information for user-defined areas, and combines that data into environmental justice and supplemental indexes.

### Brown's Creek Watershed District

the User Specified Area  
Population: 11,263  
Area in square miles: 28.56

COMMUNITY INFORMATION

Low income: 12 percent	People of color: 15 percent	Less than high school education: 3 percent	Limited English households: 0 percent
Unemployment: 2 percent	Persons with disabilities: 10 percent	Male: 47 percent	Female: 53 percent
83 years Average life expectancy	\$55,242 Per capita income	Number of households: 4,005	Owner occupied: 82 percent

BREAKDOWN BY RACE

White: 89%	Black: 1%	American Indian: 0%	Asian: 1%
Hawaiian/Pacific Islander: 0%	Other race: 1%	Two or more races: 3%	Hispanic: 5%

BREAKDOWN BY AGE

From Ages 1 to 4	6%
From Ages 1 to 18	29%
From Ages 18 and up	79%
From Ages 65 and up	20%

LIMITED ENGLISH SPEAKING BREAKDOWN

Speak Spanish	0%
Speak Other Indo-European Languages	100%
Speak Asian-Pacific Islander Languages	0%
Speak Other Languages	0%

Notes: Numbers may not sum to totals due to rounding. Hispanic population can be of any race. Source: U.S. Census Bureau, American Community Survey (ACS) 2017-2019 5-year estimates. Data comes from the census's 500-block census.

Environmental Justice & Supplemental Indexes

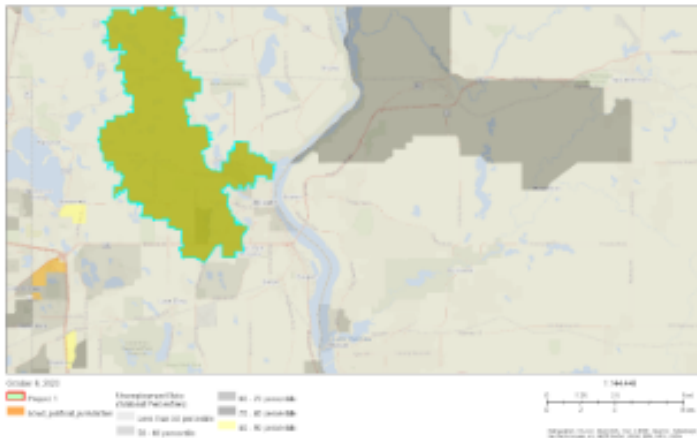
The environmental justice and supplemental indexes are a combination of environmental and socioeconomic information. There are thirteen EJ indexes and supplemental indexes in EJScreen reflecting the 13 environmental indicators. The indexes for a selected area are compared to those for all other locations in the state or nation. For more information and calculation details on the EJ and supplemental indexes, please visit the [EJScreen website](#).

EJ INDEXES

The EJ indexes help users screen for potential EJ concerns. To do this, the EJ index combines data on low income and people of color populations with a single environmental indicator.

## Brown's Creek Watershed District

the User Specified Area  
Population: 11,263  
Area in square miles: 28.56



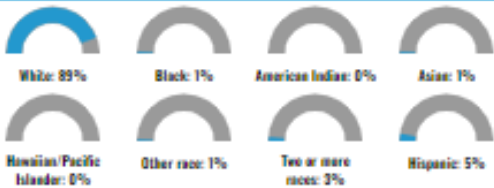
### LANGUAGES SPOKEN AT HOME

LANGUAGE	PERCENT
English	93%
Spanish	5%
Total Non-English	7%

### COMMUNITY INFORMATION



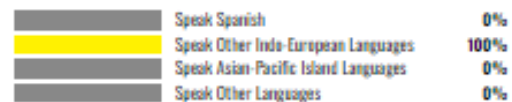
### BREAKDOWN BY RACE



### BREAKDOWN BY AGE



### LIMITED ENGLISH SPEAKING BREAKDOWN



## • How will BCWD use this information?

### • Screening Tool / Starting Point

- Preliminary indication of the Environmental and Social Indicators affecting environmental justice in the BCWD
- Preliminary indication of how an environmental indicator and socioeconomic factor comes together in the same location
- Limitations:
  - Standard unit of analysis is the Census "block group" that usually has in the range of 600-3,000 people living in it.
  - Doesn't account for all of the environmental or social indicators that may be relevant to watershed management.

Organization / Group	Stakeholder Group
Spring Meadow Farm	Agriculture / Producers
Beattystone Farms	Agriculture / Producers
Klingsporn Farm	Agriculture / Producers
Crabtree Farm	Agriculture / Producers
21 Roots Farm	Agriculture / Producers
Blueberry Fields of Stillwater	Agriculture / Producers
Costa Produce Farm & Greenhouse	Agriculture / Producers
Sunnybrook Apple Orchard	Agriculture / Producers
Saint Croix Vineyards	Agriculture / Producers
Axdahl's Garden Farm & Greenhouse	Agriculture / Producers
Stillwater Farmers Market	Agriculture / Producers
River Market Coop	Agriculture / Producers
Washington Conservation District	Environmental
Blue Thumb	Environmental
Lawns to Legumes	Environmental
Duck Unlimited	Environmental
Trout Unlimited	Environmental
Sustainable Stillwater	Environmental
North Woods and Waters fo the St.Croix Heritage Area Group	Environmental
Wild Ones - St.Croix Oak Savana	Environmental
Community Thread (non-profit org)	Healthcare / Wellness
Lakeview Hospital	Healthcare / Wellness
Stillwater Medical Group	Healthcare / Wellness
Community Kitchen at Ascension Episcopal Church (food bank)	Healthcare / Wellness
Liberty Classical Academy	Higher Education
Uof M	Higher Education
StyleXchange	Private Business
Keystone Weddings & Events	Private Business
Cabin Inn the Woods - cabin rental	Private Business
Spruce Hill Farms Horse Boarding	Private Business
West Stillwater Business Area - Target Goodwill ext.	Private Business
Stillwater Chamber of Commerce	Private Business
Hugo Area Business Association	Private Business
Greater Stillwater Chamber of Commerce	Private Business
Stillwater High School	Public Education
Rutherford Elementary School	Public Education
Wildwood Elementary School	Public Education
Lily Lake Elementary School	Public Education
Stonebridge Elementary School	Public Education
Chesterton Academy of St. Croix Valley	Public Education
Salem Lutheran School	Public Education
Stillwater Middle School	Public Education
St.Croix Catholic School	Public Education

## • Stakeholder Identification

### • List of Organizations / Groups

- Entities that may have a connection to watershed management (i.e., Art Reach Alliance)
- Entities that may connect the WD to community groups that don't have a relationship with the BCWD (i.e., Valley Outreach)

### • Categorization

#### • Stakeholder Groups

- *Tribal*
- *Environmental*
- *Healthcare/Wellness*
- *Private Business*
- *Social/Cultural*
- *Recreation*
- *Higher Education*
- *Public Education*
- *Research / Monitoring*
- *Environmental Justice*
- *Youth Groups*
- *Religious Groups*
- *Regulatory Bodies*



Organization / Group	Stakeholder Group
New Heights School	Public Education
Stillwater Middle School	Public Education
Stillwater Country Club	Recreation
Double H Stables	Recreation
The Gateway Brown's Creek trail Association	Recreation
St. Croix Valley Recreation Center	Recreation
Exclusive Equine Centre	Recreation
Rolling Hills Estate Children's Camp	Recreation
Idylwood Equestrian Centre	Recreation
Logger's Trail Golf Course	Recreation
Hidden Pines Ranch	Recreation
Applewood Hills Golf Club	Recreation
Wolf Marina	Recreation
Ole Sawmill Marina	Recreation
Oak Glen Golf Course	Recreation
Master Gardeners Program - UofM-extension	Recreation
Stillwater Community Education - community courses	Recreation
Washington County	Regulatory Bodies
Stillwater township	Regulatory Bodies
City of Lake Elmo	Regulatory Bodies
City of Hugo	Regulatory Bodies
MPCA	Regulatory Bodies
MDA	Regulatory Bodies
Natural Resources Conservation Service	Regulatory Bodies
US Environmental Protection Agency	Regulatory Bodies
US Fish and Wildlife Service	Regulatory Bodies
US Geological Survey	Regulatory Bodies
City of Stillwater	Regulatory Bodies
First United Methodist Church	Religious Groups
St Mary's Catholic Church	Religious Groups
Our Savior's Lutheran Church (ELCA)	Religious Groups
St. Michael's Catholic Church	Religious Groups
Stillwater Seventh-day Adventist Church	Religious Groups
First Presbyterian Church	Religious Groups
Salem Lutheran Church	Religious Groups
Lake Area Discovery Center - Our Savior's Lutheran Site	Religious Groups
Lake Area Discovery Center - Our Savior's Lutheran Site	Religious Groups
River Valley Athletic Club	Social /Cultural
Valley Outreach (non-profit organization)	Social /Cultural
Stillwater Armory - Minnesota National Guard	Social /Cultural
Stillwater Sunrise Rotary Club	Social /Cultural
Knights of Columbus	Social /Cultural
Public Library - Stillwater	Social /Cultural

- Stakeholder Identification

- **Categorization**

- Characteristics / Indicators

- *Age – Children 4 years or younger*
- *Age – Youth*
- *Age – 18 to 64 years*
- *Age – Over 64 years old*
- *Income*
- *Language Proficiency*
- *Education*
- *Renters*

- Environmental Interaction

- *High impact use*
- *Medium impact use*
- *Low impact use*
- *Protect it*
- *Improve it*
- *Study it*
- *Indirect interaction*

Organization / Group	Stakeholder Group
Courage Centre	Social /Cultural
Artreach Alliance	Social /Cultural
United Hmong Family Org.	Social /Cultural
The Partnership Plan (non-profit org)	Social /Cultural
The Connect Center (non-profit org)	Social /Cultural
Valley Friendship Club (non-profit org)	Social /Cultural
The Zephyr Theatre	Social /Cultural
Stillwater Event Center	Social /Cultural
Great Lakes Indian Fish & Wildlife Commission (GLIFWC)	Tribal
Boy Scouts	Youth Groups
Homeowners Associations (HOAs)	Regulatory Bodies

## CAC Activity

Review the list provided today:

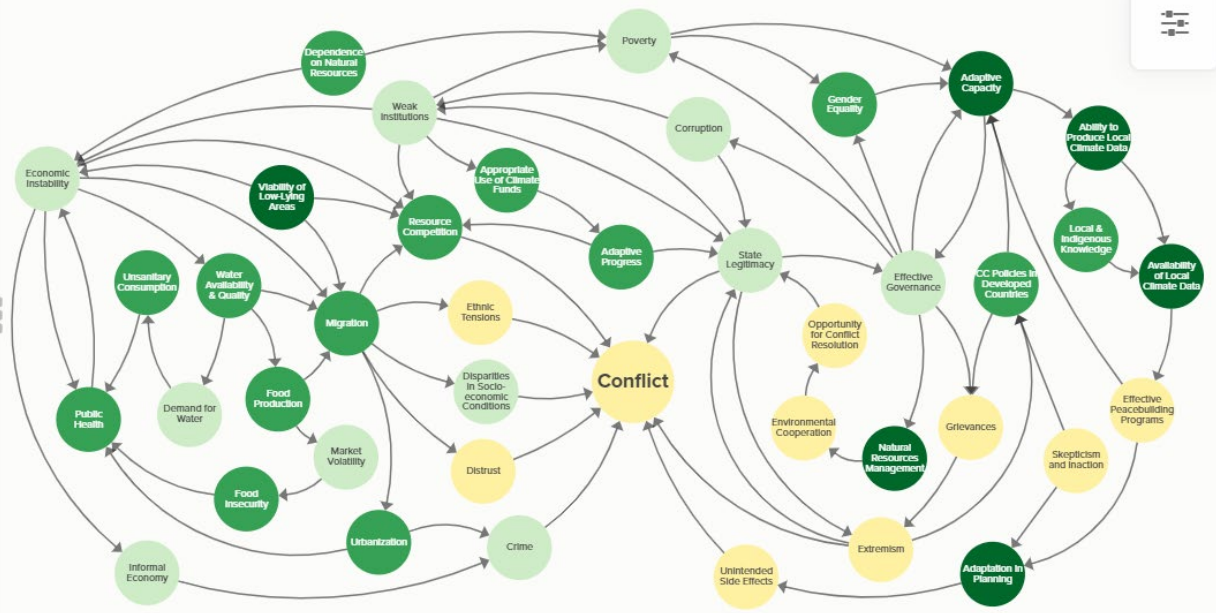
1. *Who is missing from the list?*
2. *Do you have a relationship (contact) for any of these entities?*
3. *Would you be willing to reach out to your contact(s) to conduct a short interview?*

## • Stakeholder Identification

### • Categorization

- Level of interest in watershed protection
  - *Low, Medium, High*
- Organization Type
  - *State*
  - *Municipal*
  - *County*
  - *Federal*
  - *Regional Group*
  - *Producer/Agricultural*
  - *Land Trust*
  - *Tribe*
  - *Business*
  - *Non-Profit*
- What would they bring?
- What would they get?

Search



## Legend

- Areas of Potential Influence for Peacebuilding
- Partnership with Climate Adaptation/Environmental Groups
- Partnership with Development/Aid Groups
- Partnership with Climate/Environment & Development/Aid Groups

## • Visualization Tool

### • Kumu

- Organizes complex data into relationship maps
- Map the potential stakeholder list to see things like:
  - Who has participated in the past?
  - How many entities that we know about represent a particular stakeholder group?
  - What kind of work are these entities involved in?
  - Is the entity likely to participate directly or are they a gateway to other groups?

- Finalize Stakeholder Engagement List
  - **CAC Feedback**
    - Please share your thoughts about who is missing, who you have connections to, your willingness to participate in conversation/interviews
  - **Board of Manager Feedback**
    - Presenting the same information at the October 11, 2023 Board Meeting
- Developing approach strategy and standardized narrative
  - **Conduct interviews**
  - **Process feedback/information collected in interviews**
  - **Update Stakeholder List and Stakeholder Map**

# Questions?



Thank you!

