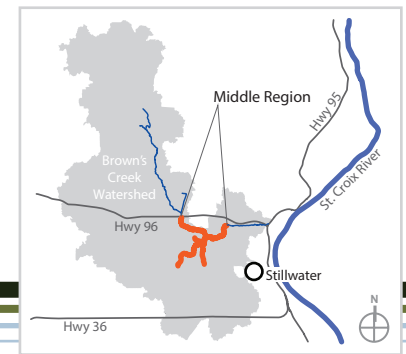


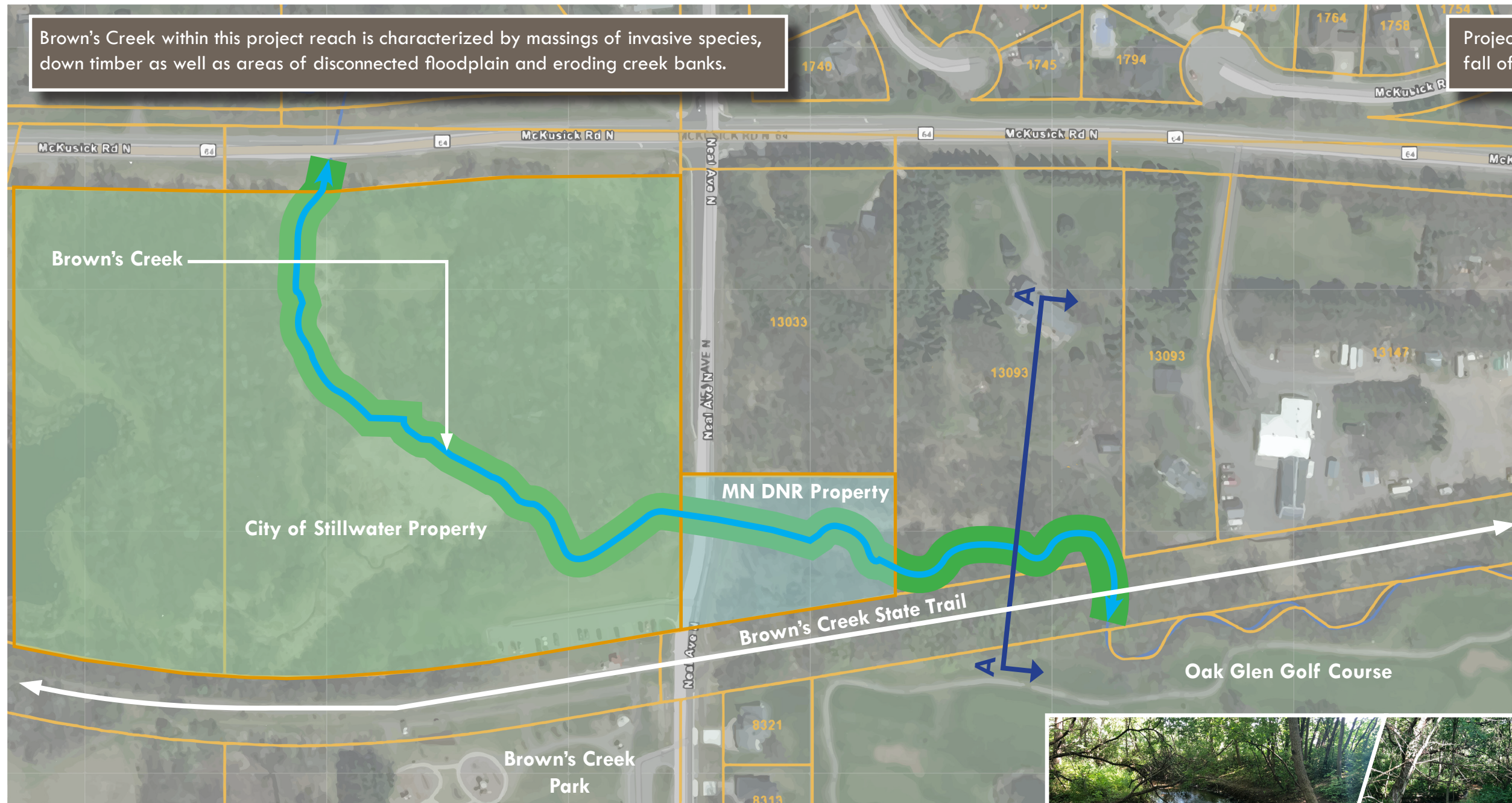
BROWN'S CREEK

Restoration Between McKusick Road & Brown's Creek State Trail



Brown's Creek within this project reach is characterized by massings of invasive species, down timber as well as areas of disconnected floodplain and eroding creek banks.

Project implementation to occur in summer/fall of 2024.

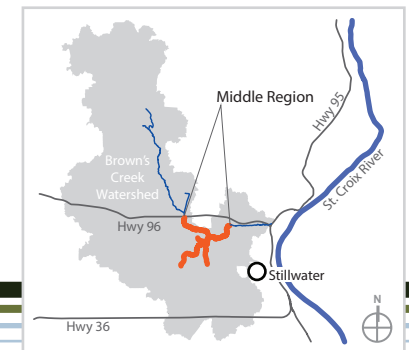


Approximate Restoration Area

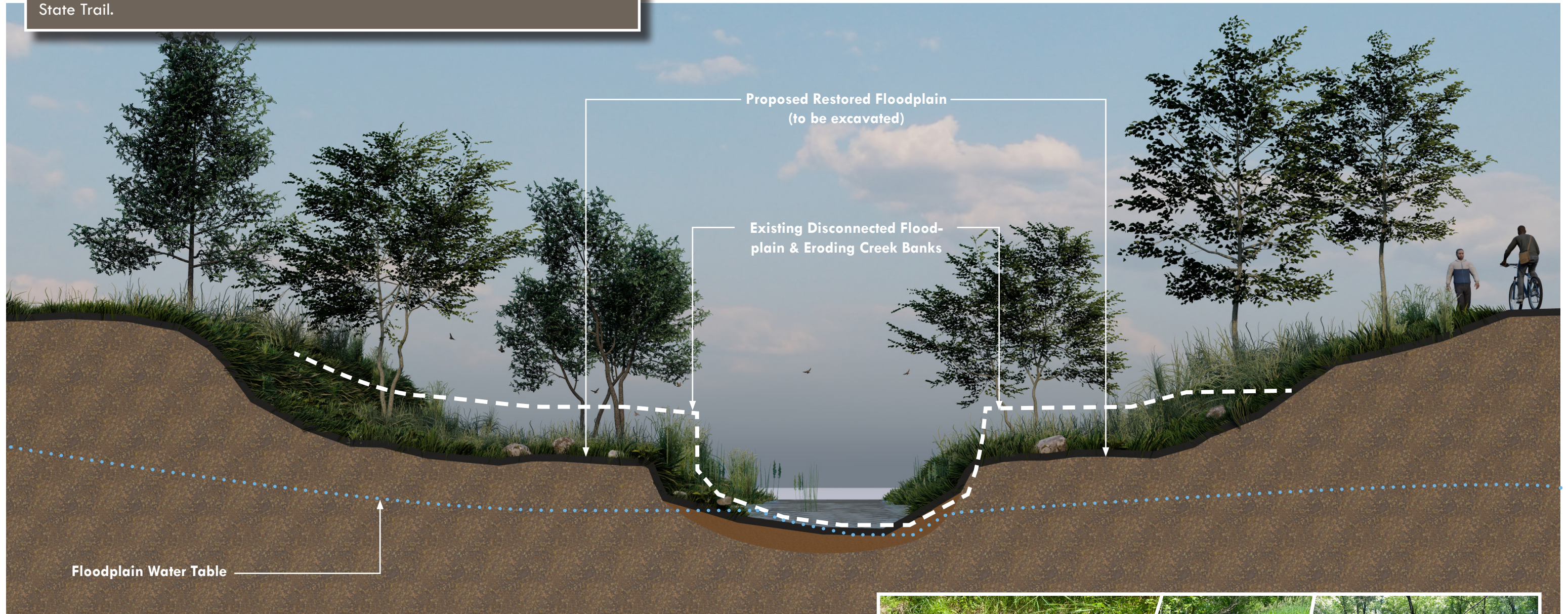


BROWN'S CREEK

Restoration Between McKusick Road & Brown's Creek State Trail



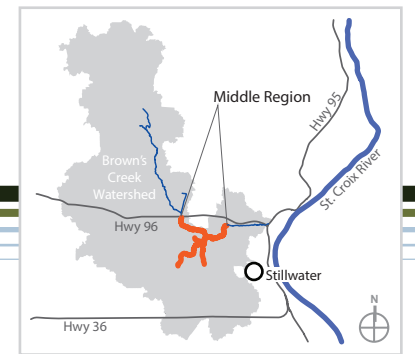
Potential restoration activities include bank shaping along existing eroded banks throughout the project reach and selective tree thinning that would benefit the herbaceous understory in this reach and improve creek access from Brown's Creek State Trail.



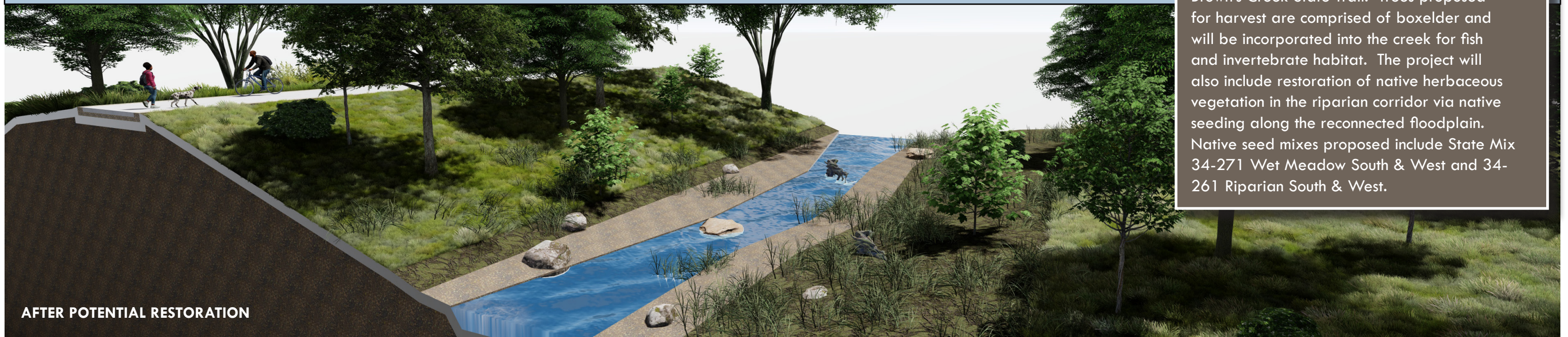
EXISTING ERODING CREEK BANKS IN PROJECT REACH

BROWN'S CREEK

Restoration Between McKusick Road & Brown's Creek State Trail



CURRENT CONDITIONS

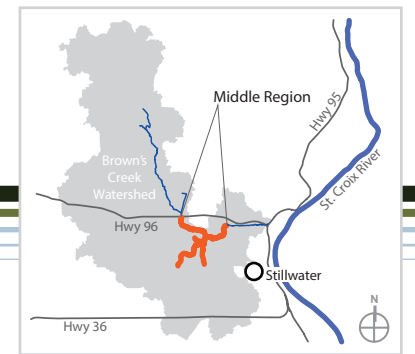


AFTER POTENTIAL RESTORATION

Habitat restoration for macroinvertebrates and fish will include restoration of riffle and pool habitat which is lacking in much of the project reach due to bank erosion and instream sedimentation. Based on the length of the reach, it is anticipated about 25 riffles and pools will be restored. Furthermore, the project will include removal of invasive species and will improve access to the creek from the existing Brown's Creek State Trail. Trees proposed for harvest are comprised of boxelder and will be incorporated into the creek for fish and invertebrate habitat. The project will also include restoration of native herbaceous vegetation in the riparian corridor via native seeding along the reconnected floodplain. Native seed mixes proposed include State Mix 34-271 Wet Meadow South & West and 34-261 Riparian South & West.

BROWN'S CREEK

Restoration Between McKusick Road & Brown's Creek State Trail



CURRENT CONDITIONS



Golf Course

Brown's Creek State Trail

Brown's Creek

Private Residence

AFTER POTENTIAL RESTORATION



Approximate Restoration Area

SECTION A-A