

Project Name | Multiple Projects: Vegetative Maintenance

Date | 3/13/2024

To / Contact info | BCWD Board of Managers

Cc / Contact info | Karen Kill, District Administrator

From / Contact info | Pat Conrad; Ryan Fleming, PE; Mike Majeski

Regarding | 2024 Vegetative Maintenance Scope of Services

Background

Brown's Creek WD has committed to doing maintenance on vegetation at a number of sites throughout the watershed. The maintenance is conducted to preserve existing high value naturally occurring native vegetation (as is the case for the Grant Fen), to assist in the establishment of native vegetation of recently constructed projects (Brown's Creek Trail, Long Lake Shoreline, Morgan Ave. Sand Filter), or to control invasive and woody vegetation that has sprouted up at previously constructed project sites (THPP and Kismet Basin).

Scope of Services

The following summarizes the work proposed at each project site for 2024. The maintenance work will be conducted by Natural Shores Technologies. Refer to attached map for site locations.

Grant Fen 2024 Maintenance Estimate

Spring Mowing

3-4 Maintenance visits throughout season including:

- Spot herbicide treatments of reed canary grass, thistle, and other non-native weeds
- Regular weed whipping or mowing to prevent weeds from going to seed
- Re-seeding areas with on-site seed sources
- Buckthorn or other undesirable tree removal (ex. Amur maple)

Long Lake Shoreline 2024 Maintenance

Spring Mowing

3-4 Maintenance visits throughout season including:

- Spot herbicide treatments of Reed Canary Grass, Thistle, Cattail, and other non-native weeds
- Regular weed whipping or mowing to prevent weeds from going to seed
- Buckthorn or other undesirable tree removal (ex. Amur Maple)
- Re-seed or re-plant areas where weeds have been removed in sections

Brown's Creek Trail 2024 Maintenance

Spring Mowing

3-4 Maintenance visits throughout season including:

- Spot herbicide treatments of reed canary grass, thistle, sweet clover, and other non-native weeds
- Regular weed whipping or mowing to prevent weeds from going to seed

- Re-seed or re-plant areas where weeds have been removed

THPP 2024 Maintenance

Spring Scouting/Assessment

3-4 Maintenance visits throughout the season including:

- Spring and fall spot herbicide treatments of reed canary grass, purple loosestrife, Canada thistle, and other invasive weed species
- Regular weed whipping or mowing to prevent weeds from going to seed

Morgan Ave. Sand Filter 2024 Maintenance

Spring Mowing

4-5 Maintenance visits throughout the season including:

- 2 herbicide treatments (minimum)
- Prevention of seed maturation by hand pulling or weed whipping
- Removal of volunteer tree species

Kismet Basin 2024 Maintenance

Spring Mowing

3-4 Maintenance visits throughout the season including:

- Spring and fall spot herbicide treatments of reed canary grass, spotted knapweed, and other invasive weeds
- Regular weed whipping or mowing to prevent weeds from going to seed

Site Progress Reports

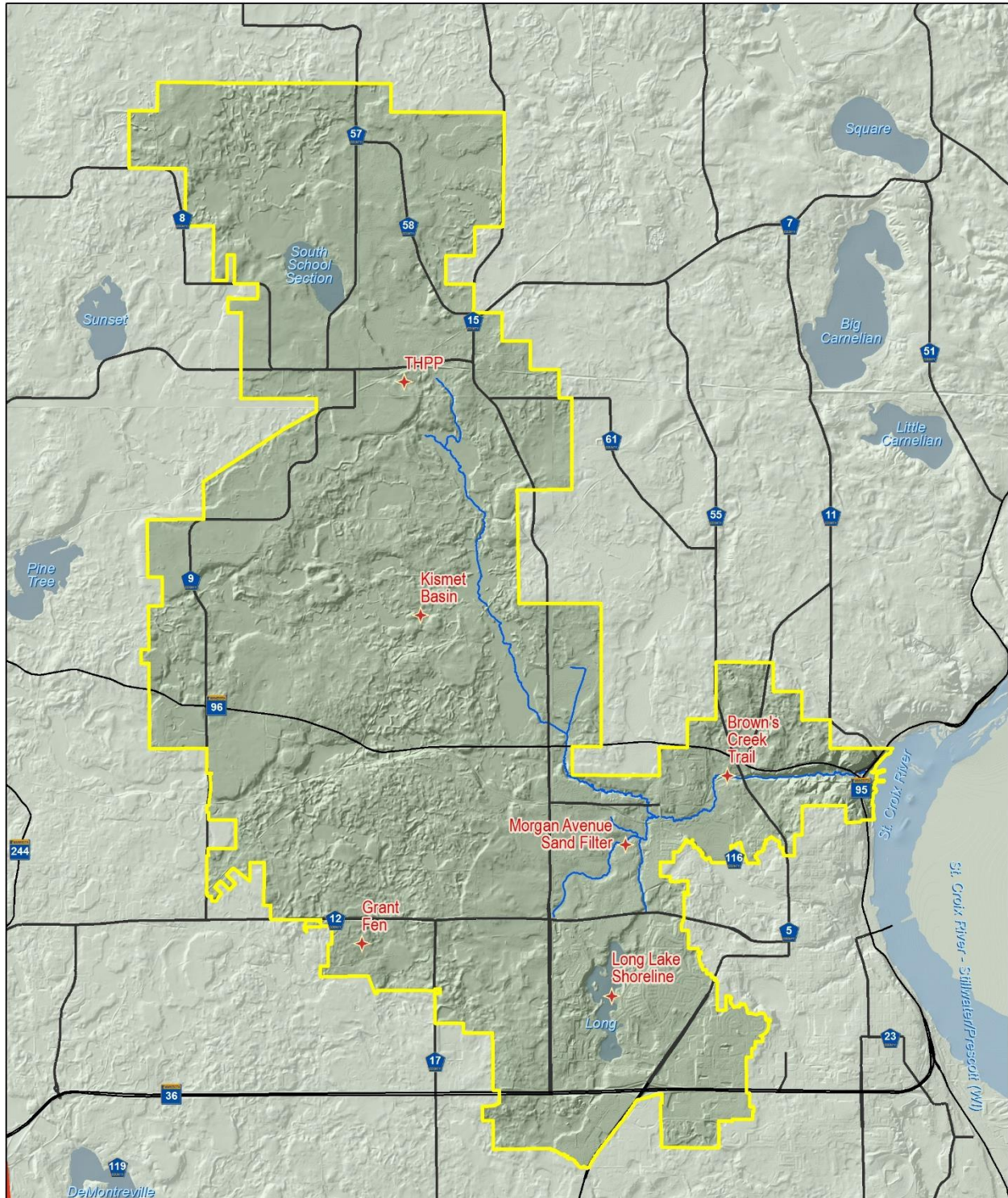
Detailed progress reports for each site will be completed following the maintenance season. Reports will summarize work done during 2024, progress being made toward restoration goals and maintenance recommendations for 2025.

Requested Action

Approve vegetative maintenance for the projects as follows:

Tasks	Estimated Cost	Account Number
Brown's Creek Trail	\$1,950	948-0000
Long Lake Shoreline	\$2,600	948-0000
THPP	\$3,900	948-0000
Kismet	\$2,000	948-0000
Morgan Avenue Sand Filter	\$1,850	948-0000
Grant Fen	\$3,000*	953-0000
Site Progress Reports	\$1,000	953-0000
TOTALS	\$16,300	NA

* Includes \$500 contractor coordination time



Legend	
	Jurisdiction 2017
	Site
	Lake, Pond or Reservoir
	River or Stream (polygon)



**BCWD
Vegetation
Maintenance Site**



Miles
0 1

Emmons & Olivier Resources, Inc. is an Equal Opportunity Affirmative Action Employer