

BROWN'S CREEK WATERSHED DISTRICT / SPRING 2020

WATERSHED NEWS

What is a watershed?

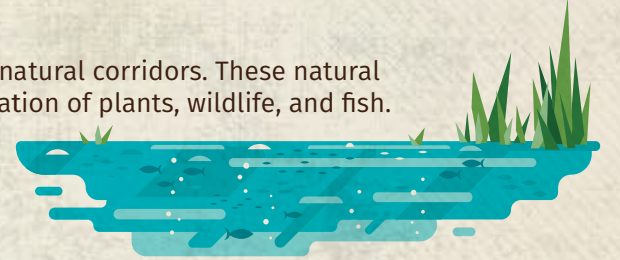
A watershed district is a unit of government that is based on the natural boundary of a watershed. The Minnesota Watershed District Act was implemented in 1955. It allowed for the establishment of local units of government, such as watershed districts or water management organizations, to protect and manage water resources based on hydrologic boundaries rather than political boundaries. Watershed Districts address many water resource issues such as: water quality protection, erosion control, and flood control by supporting land use practices that protect and preserve water resources in the district.

Our Board of Managers

Craig Leiser, President
 Klay Eckles, Vice-President
 Chuck LeRoux, Secretary
 Gerald Johnson, Treasurer
 Sharon Schwarze, 2nd Vice President

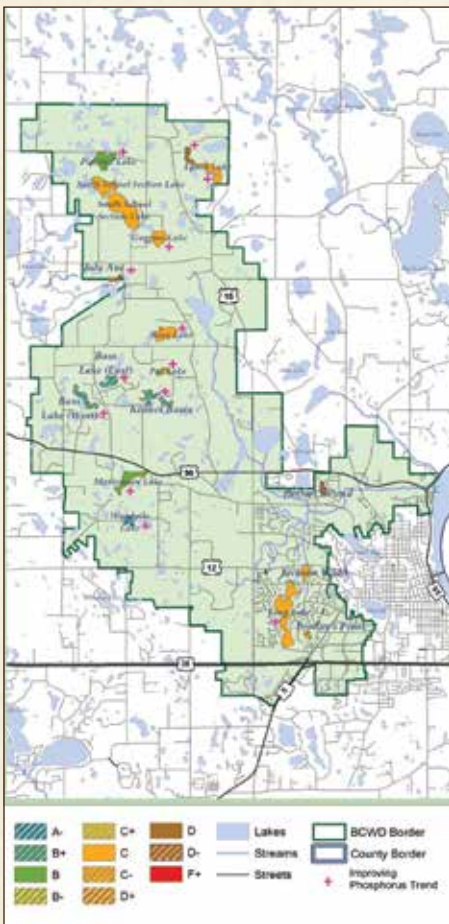
Regular board meetings are held at 6:30p.m. on the second Wednesday of each month at Family Means in Stillwater, MN. Virtual meetings that are accessible by the public may be held in response to COVID-19 restrictions.

VISION STATEMENT: The Brown's Creek Watershed District is made up of communities interlaced with natural corridors. These natural corridors improve the function and value of the District's water resources and support a diverse population of plants, wildlife, and fish. The District brings people and the environment together to accommodate development that preserves the connection between surface water and groundwater and enhances the quality of these resources.



WATER QUALITY REPORT CARD

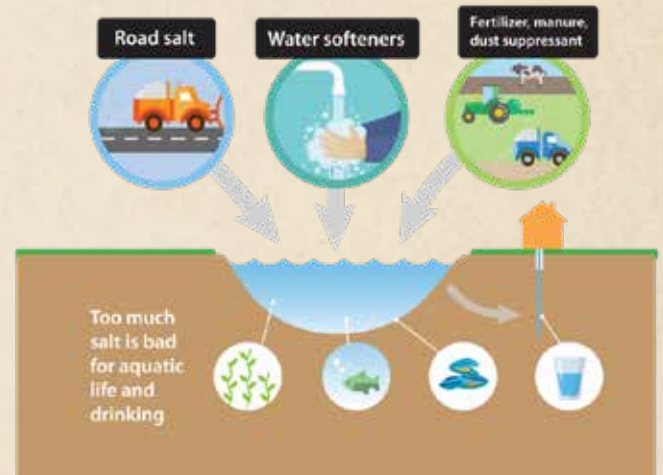
The Brown's Creek Watershed District uses information gathered by the water resource scientists, who regularly test the water. Continued monitoring of the District's lakes provides us with a clearer picture of how to best restore and protect our resources for the future. The lake grades for 2019 are below:



WATER SOFTENERS & CHLORIDE POLLUTION

Chloride pollution is a growing concern in freshwater resources. Road salt is a commonly recognized source of chloride pollution representing about 44% of chloride pollution in MN. another lesser known source is water softeners, which make up more than 11% of chloride pollution. Typical water softeners can annually produce 600 gallons of wastewater containing chlorides. Wastewater treatment plants are not designed to remove chlorides so this water is discharged back into surface water resources, and can even end up in groundwater. So what is the solution? Some areas do not require water softeners to prevent pipes scaling. You can test your water hardness and consult a plumber to help make this determination. Some other considerations and things you can do include choosing:

- Potassium salts instead of sodium
- Evaporated salt instead of solar or rock salt
- A saltless water softener, or one that uses citrates or potassium salt instead of sodium
- A shower head water softener (if hard water scaling isn't a concern)
- To set your water softener to the lowest level that prevents scaling in pipes
- A water softener that can auto-detect when the beads need to be regenerated, rather than one that simply operates on a timer
- A portable exchange water softener, and contract with a water softener company to dispose of the wastewater in an environmentally responsible way



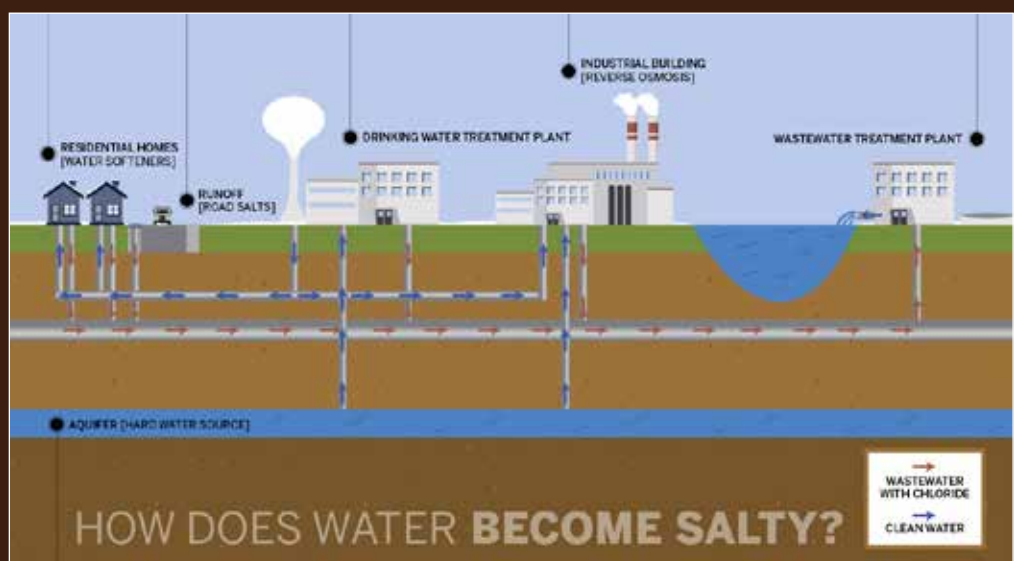
HOW YOU CAN HELP

Join the CAC: Meetings are held on the 2nd Monday of even months at 8pm at the Stillwater Public Library

Request a site visit:
mnwcd.org/site-visit-signup-form

Sign up for a SMART irrigation controller from the City of Stillwater: more information will be available this summer!

Adopt-a-Drain
 Follow environmentally friendly yard care tips all throughout the year.



Preserving the Integrity of the Watershed for Future Generations

455 Hayward Avenue North, Oakdale, MN 55128 / 651-330-8220 x26 / bcwd.org

facebook.com/browns creek watershed district



UPCOMING REUSE PROJECTS

The BCWD has been working with Oak Glen Golf Course and Applewood Golf Course to plan reuse projects. Reuse projects involve the use of stormwater in applications such as irrigation, cooling, washing, and toilet flushing. Different applications require different levels of water treatment. There is currently an interagency effort to advance safe and sustainable reuse in Minnesota. Reuse projects have a dual benefit of reducing water consumption and improving water quality in our natural resources! Stay tuned for updates on the planning process!



SPRING FLOODING

Minnesota climatologists are observing trends towards wetter and wetter years. This has led to an increase in spring flooding issues. The county and state offer guidance for landowners who have septic systems, wells, or live in a floodplain. Find this information and more at this link: <http://www.mnwcd.org/flooding>

BROWN'S CREEK OPEN YARDS SERIES*

Brown's Creek Nature Preserve Tour

June 3, 6-8 pm, Brown's Creek Park, Neal Ave, Stillwater
(Alt. Date, June 17th)

Explore the Brown's Creek Nature Preserve and learn more about this neighborhood gem!

All Things Raingardens

July 15, 6-8 pm, 2421 Croixwood Blvd, Stillwater

See an example of a rain garden, ask about native plants, and get ideas for your own yard!

South Twin and Heifort Pond Walking Tour

August 15, 10am-12pm, Brown's Creek Park, Neal Ave, Stillwater

Learn about where water resource protection is occurring right in your neighborhood!

Buckthorn Brigade

September 27 and October 3, 9am-12pm, Long Lake Walking Path, Stillwater

Learn buckthorn management techniques and work to improve your neighborhood trail! Meet at the end of 62nd St. on the south side of Long Lake.

**To RSVP, please contact Cameron Blake
cblake@mnwcd.org or 651-330-8220 x34**

*Due to COVID-19 these events may be canceled or virtual. Check out our website for up to date information prior to the events.



**BROWN'S CREEK
WATERSHED DISTRICT**

455 Hayward Avenue North / Oakdale, MN 55128

NON-PROFIT
ORGANIZATION
U.S. POSTAGE
PAID
STILLWATER, MN
PERMIT NO. 255



Have a hard time keeping up with garden maintenance?

**Sign up for a calendar
that will send you monthly
reminders to keep your
raingarden or native
planting in the best
shape possible!**

Check out the website
link below for directions
on how to download this
helpful resource:

[www.mnwcd.org/
maintenance-guide](http://www.mnwcd.org/maintenance-guide)

TROUT IN THE CLASSROOM

Minnesota Trout in the Classroom (TIC) is an educational arm of Minnesota Trout Unlimited.

In TIC, teachers use trout as a platform to implement educational opportunities for students to learn about watersheds, water quality, fish biology, and wetland ecology in hands-on lessons and field days. Through our grant funding, TIC is able to provide aquarium equipment to teachers. Classes will raise trout from eggs to fingerlings, which the students release into a designated trout stream or pond in the spring. Last year there were 1800 Rainbow trout raised and released into Brown's Creek. This spring there will be even more!



Preserving the Integrity of the Watershed for Future Generations

455 Hayward Avenue North, Oakdale, MN 55128 / 651-330-8220 x26 / bcwd.org

facebook.com/browns creek watershed district