

# FLOODPLAIN RESTORATION



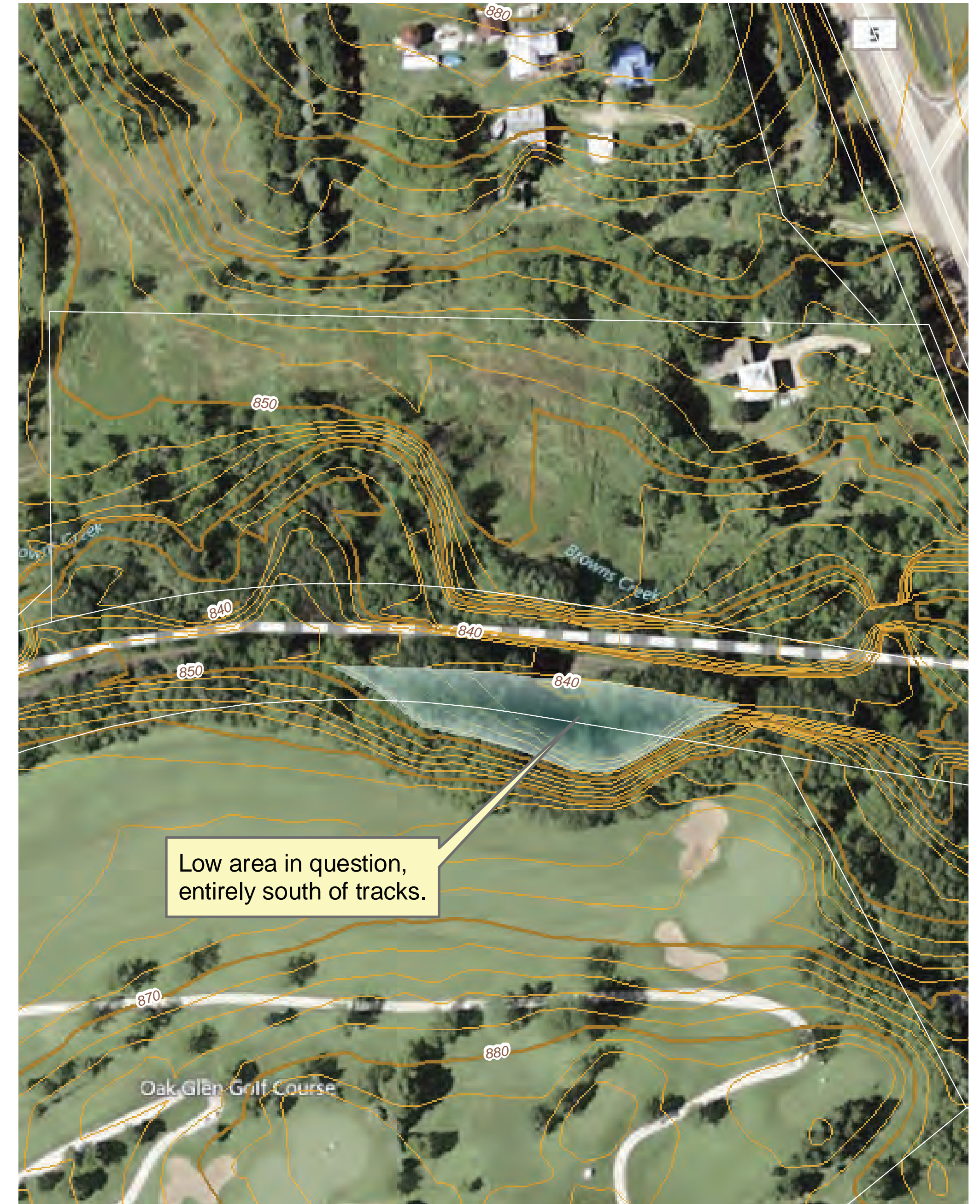
## Pre-Existing Conditions:

- Rail line straighten the creek and cut it off from its floodplain; as a result this stream reach had become degraded
- Steep embankment of rail line continued to eroded into stream



## Restored Condition:

- Trail (former rail line) pulled away from stream, permitting critical access to floodplain
- Floodplain was planted and seeded with native floodplain plants



## Project Summary:

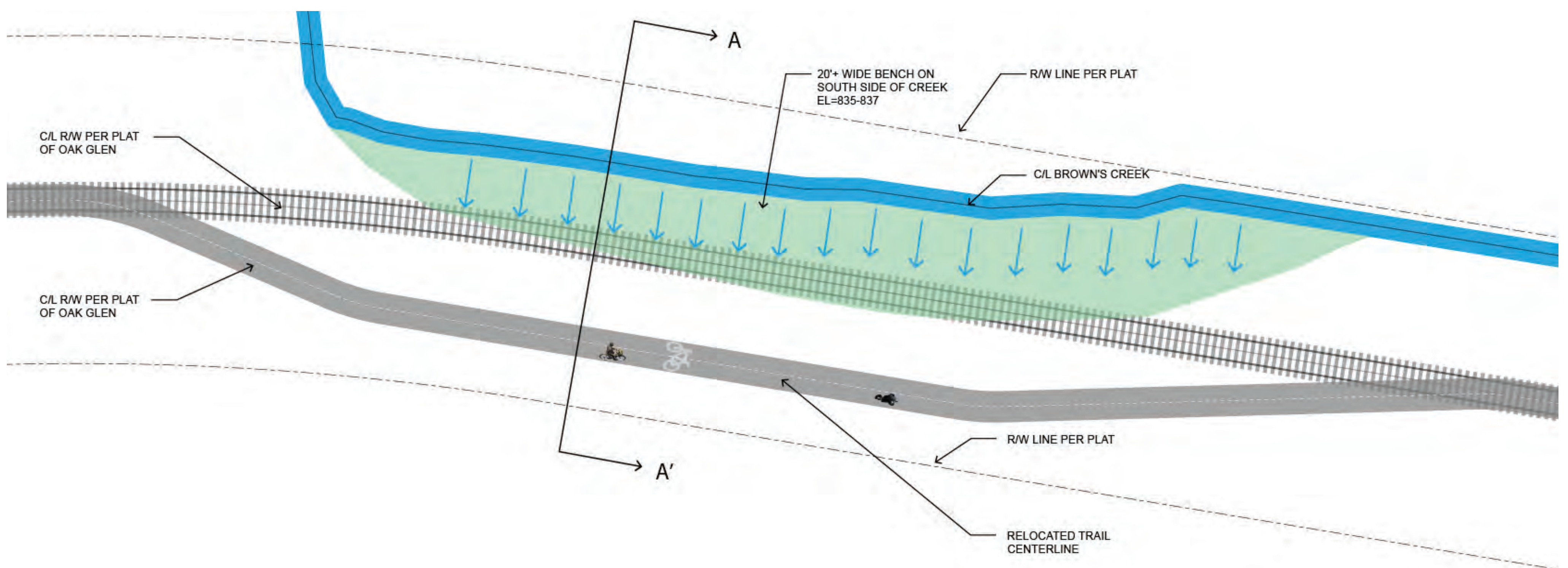
The Brown's Creek Watershed District and the MN Department of Natural Resources have partnered to restore one of the more degraded reaches of Brown's Creek.

Critical floodplain, which was cut off by the rail line over a century ago, was reconstructed. This provides a critical 'release' of flood flows, which will result in a more stable and healthy stream.



## Project Benefits:

- Reduction in sediment contribution to stream addresses TMDL
- Reducing stream flow velocities protects historic Stone Arch Bridge
- Improved instream and upland habitat
- Enhances opportunity for cultural and environmental education
- Localized flooding reduction



## Project Participants:

Project Partner: MN Dept. of Natural Resources / Design: Emmons & Olivier Resources, Inc.



# Brown's Creek Watershed District