

Does My Tree Have Emerald Ash Borer (EAB)?

STEP 1

I think my ash tree may be infested with EAB.

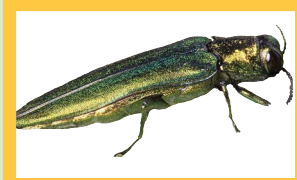
IF YES, GO TO STEP #3



STEP 2

I suspect I have seen an EAB.

IF YES, GO TO STEP #5



Emerald Ash Borer



Six-spotted Tiger Beetle



Japanese Beetle



Polydrusus Weevil

Insects are NOT to scale.

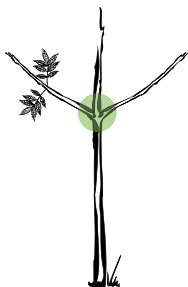
STEP 3

Is my tree an ash?

IF YES, GO TO STEP #4

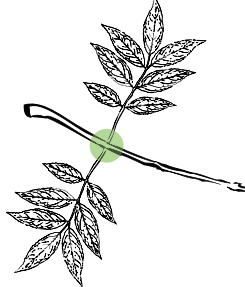
IF NO, GO TO STEP #6

Ash Trees Have:



Opposite Branching

Ash Trees Have:



Compound Leaves

Ash Trees Have:



5 to Many Leaflets

STEP 4

Does my ash tree have symptoms of EAB?

IF YES, GO TO STEP #5

IF NO, GO TO STEP #6



Woodpecker Holes

Woodpeckers like EAB larvae and woodpecker holes may indicate the presence of EAB.



Bark Cracks

EAB larvae tunneling beneath the bark can cause the bark to split open, revealing the larval galleries beneath.



S-Shaped Galleries

The distinct S-shaped galleries under the bark are diagnostic of EAB.

STEP 5

It could be EAB.

Contact Arrest the Pest:
Arrest.the.pest@state.mn.us
1-888-545-6684 (Voicemail)



STEP 6

It isn't EAB; so, what is it?

Visit the University of Minnesota Extension "What's Wrong With My Plant" website to diagnose the problem. You can also visit your local forester or arborist.
www.extension.umn.edu/garden/diagnose

