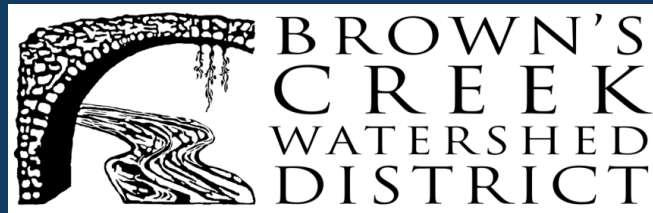


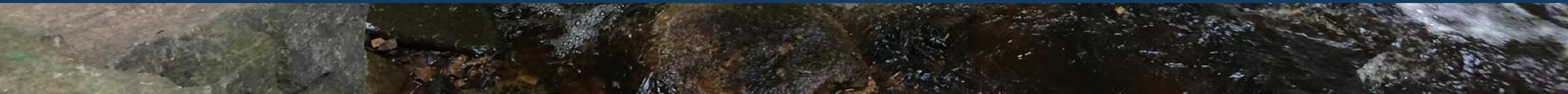


BCWD Regulatory Program Review



Beth Carreno

April 4, 2025

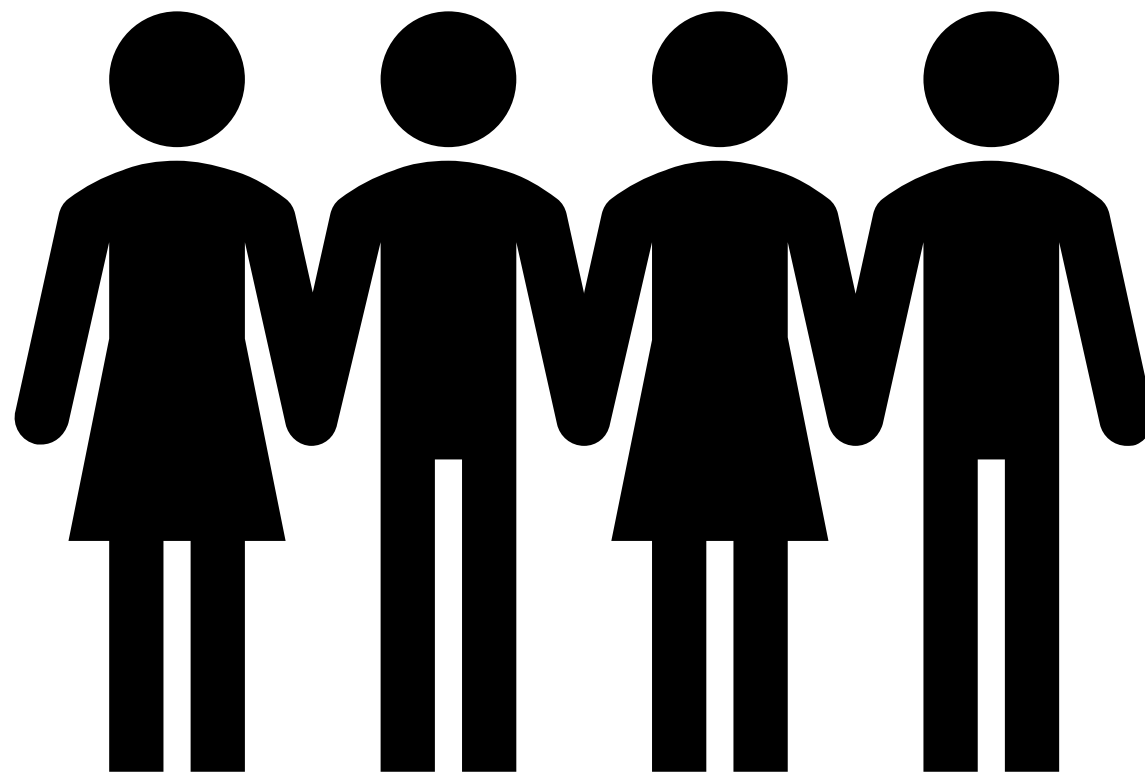




Agenda

- Introductions
- Review of process
- Present recommendations & Board direction
 - Rules: 4
 - Processes: 6
 - Outreach & Information: 6
- Follow up discussions

Introductions & Expectations

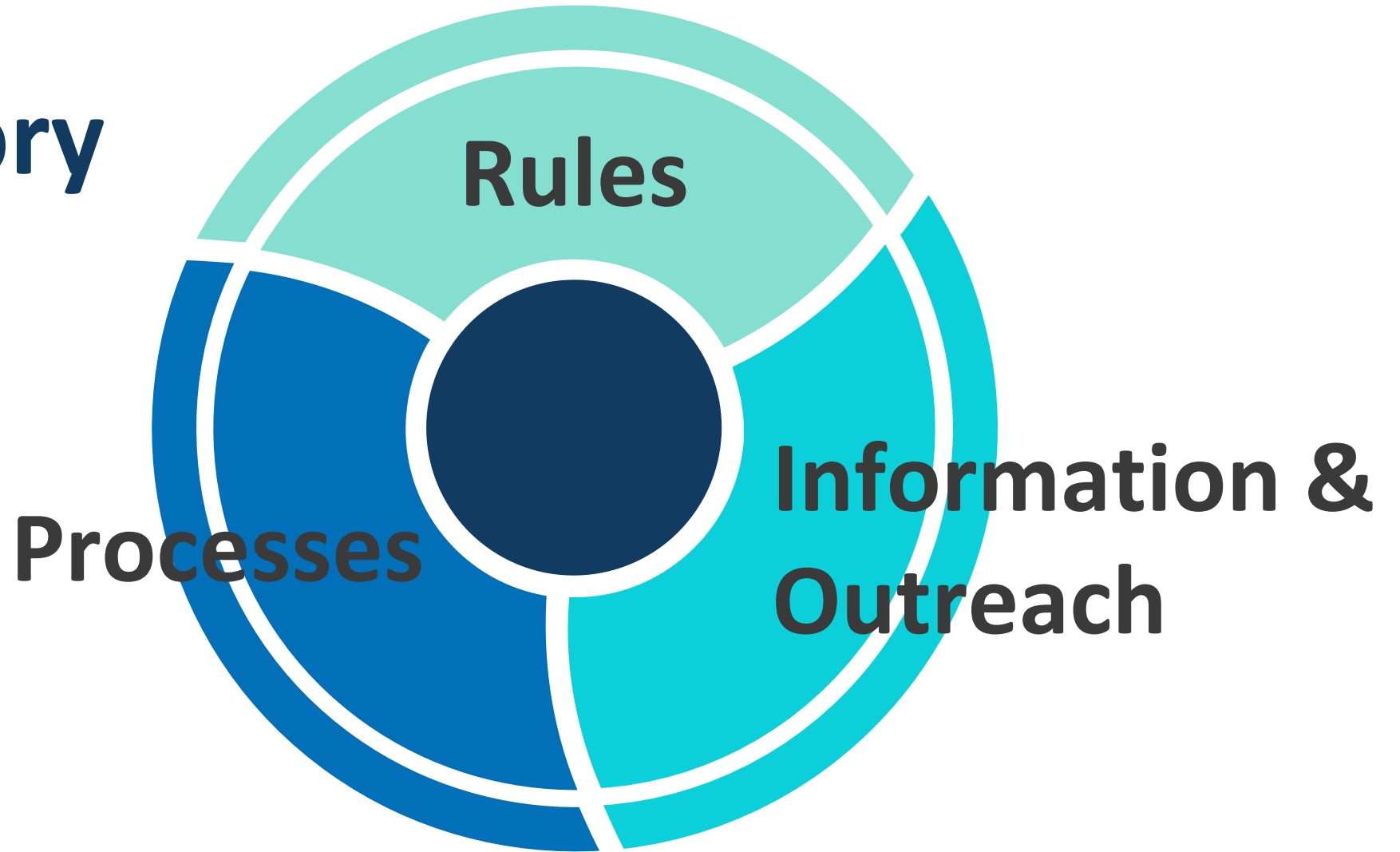


Purpose

- Gain feedback on current BCWD regulatory program
- Provide recommendations to Board of Managers for future decisions
 - Watershed Management Plan
 - Regulatory Program



BCWD Regulatory Program



Preparation & Process

- Logistics: invitation list, communication, & date
- Process
 - Facilitated
 - Focus on questions *and* answers
 - Changing groups and format
 - Increasing interactions
 - Sharing thoughts out loud as well as in writing
- Importance of listening to one another



Who Was in the Room?

39 Attendees

- Residents
- HomeOwners Associations
- Permittees
- Developers
- BCWD communities
- Washington County staff
- State agency partners
- Other Watershed Districts
- BCWD Citizen Advisory Committee
- BCWD Board members



Not So Simple



What COULD Change

- Communication Strategy
- Clarity of Rules
- Flexibility of Rules
- Processes
- Role of the cities
- The rules themselves

What WON'T Change

- Existence of watershed districts
- Core statutory requirements for watershed districts
- Existence of rules
- Resource protection

Who Benefits from the Regulatory Program?

What are the most important components of a successful regulatory program?

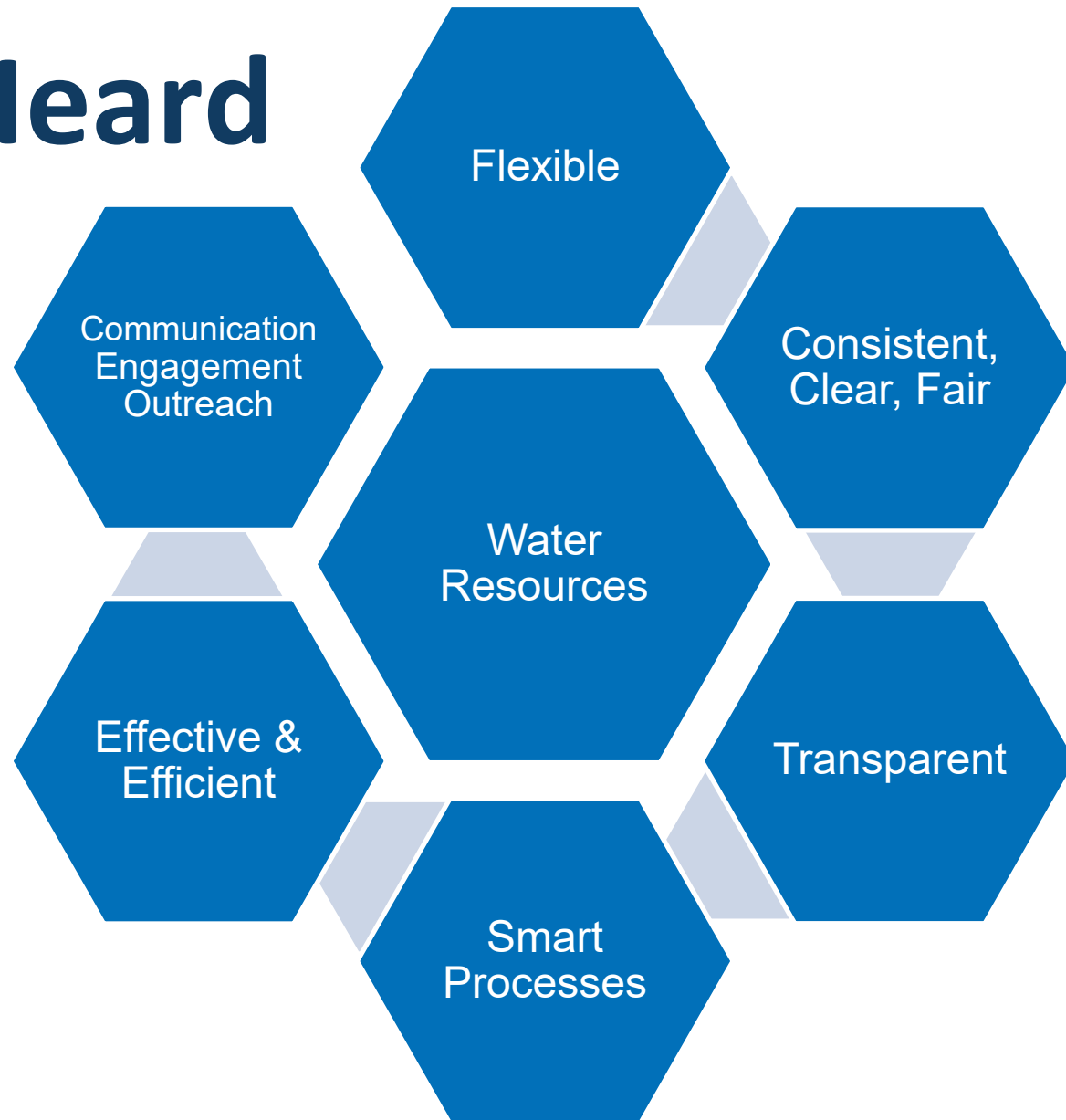
What are improvements or changes that you would like to see in the regulatory program?

What would those improvements or changes result in?

What is working in the current BCWD regulatory program?

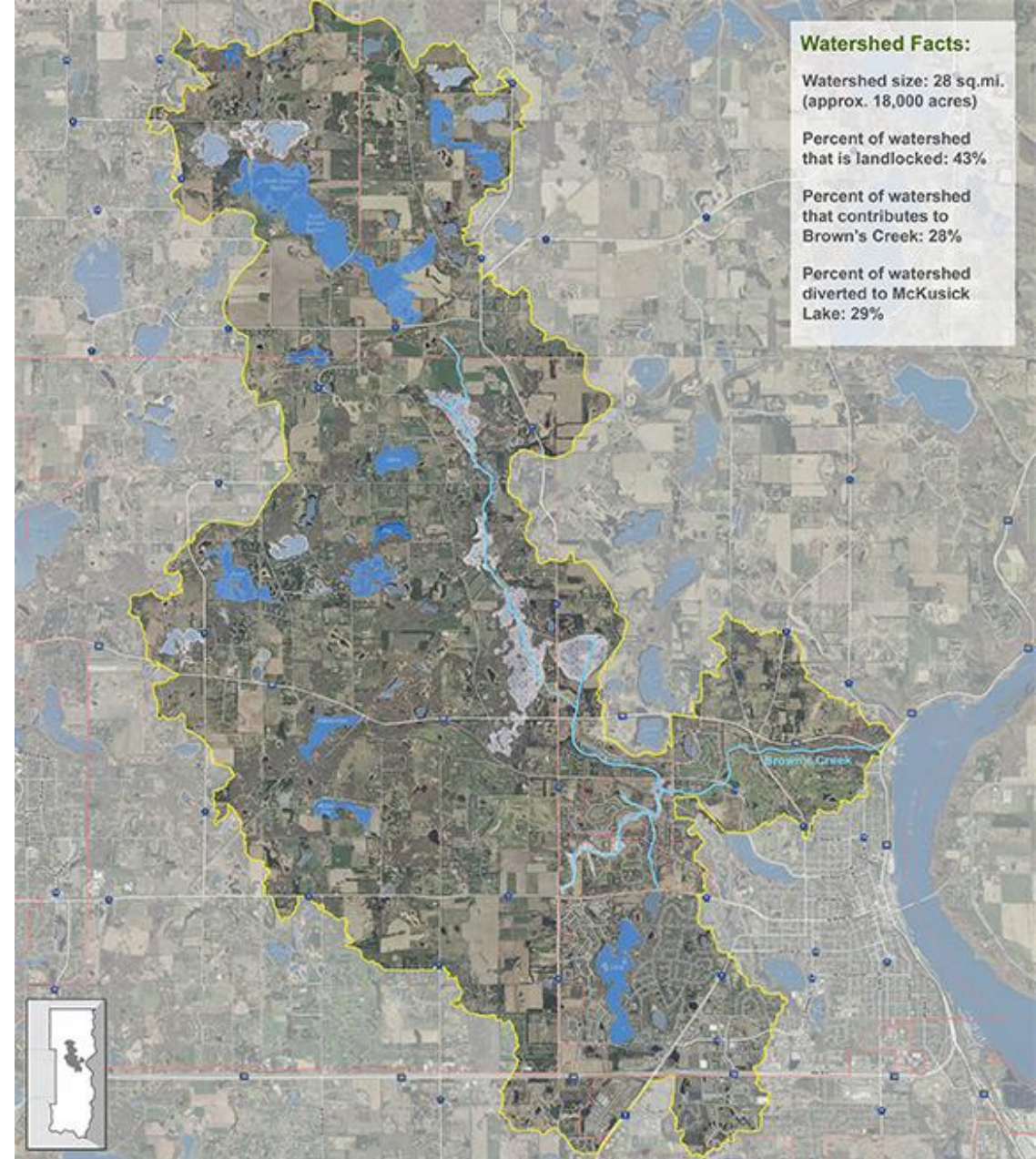
Provide specific suggestions and strategies for BCWD rules, processes, and O&E?

What We Heard



Theme One

The BCWD regulatory program should be transparent, efficient, equitable, consistent, and not unduly complicated



Theme Two

The BCWD regulatory program should protect and improve the resource and properties of the District, and there should be accountability





Theme Three

Communication is critical, should be consistent, and should lead to improved engagement and understanding with the public, partners, permittees, and other specific audiences including engineers representing permittees and the business community

Recommendations

Rules

Processes

Outreach & Information

Board Direction

Request
additional
information or
clarification
from partners

Direct staff
to explore
& get
more info

SHELF

?

**Direct
staff to
begin**

**Take to
WMP
process**

Implement



- Website
- Annual Reports & Newsletters

Staff Will Explore & Present Details for Decision Making

- Develop and implement a process for follow-up on closed projects, additional inspections, and enforcement
- Assess the viability of an application portal and electronic payment process



Request Clarification from Partners

- Identify opportunities to increase administrator / Board's ability to provide flexibility without increasing the number of variances
 - What does flexibility mean?



Request Clarification & Continue to Explore



- Allow regional solutions

Request Clarification from Partners

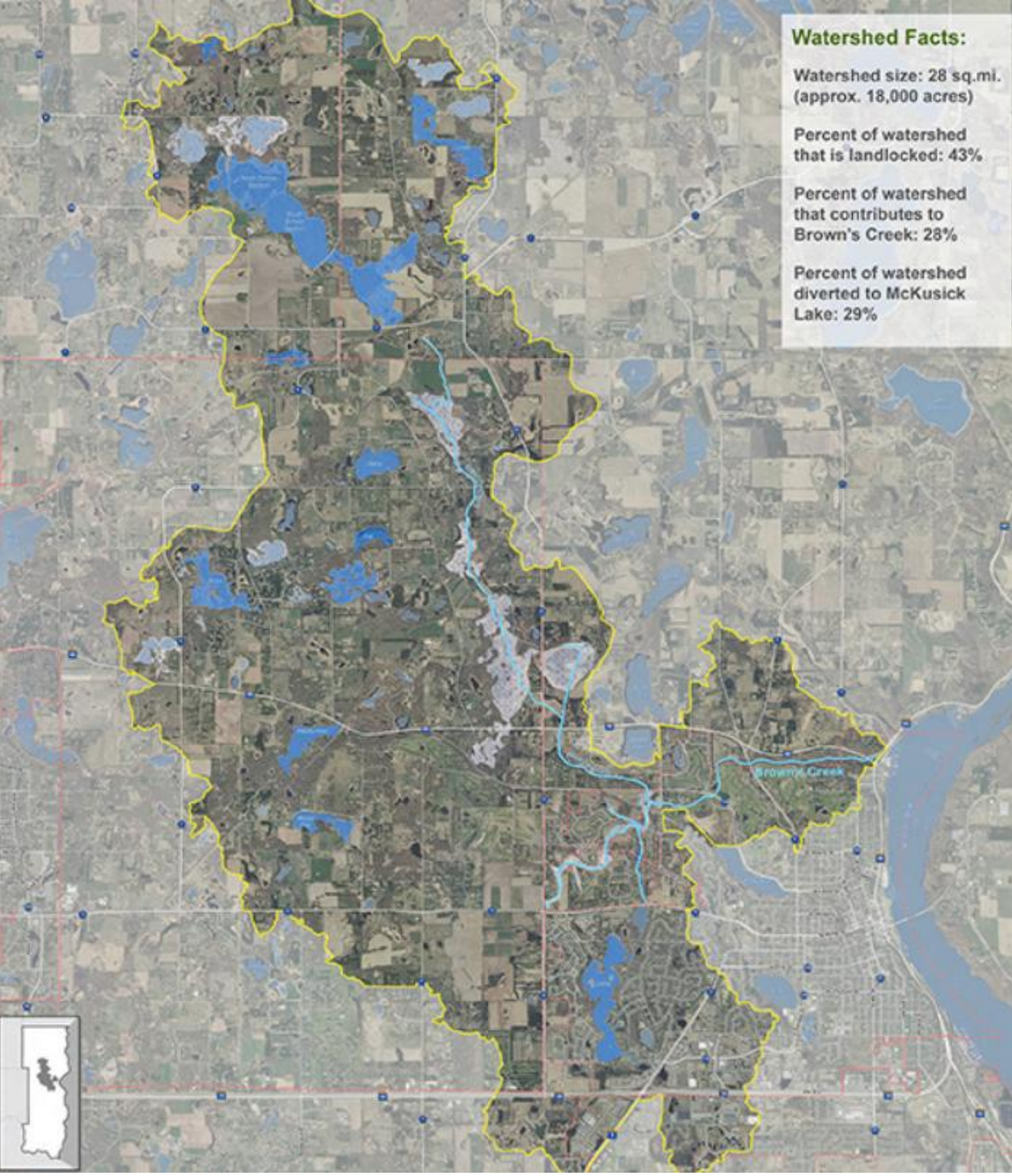
- Appeals process
 - What do you want to appeal?
When? Why?
 - What needs to be fixed?



Consider During WMP Process

HOAs – identify and implement strategies to improve “hand-off” from developers and HOAs

Develop guidance documents for permittees and potential permittees

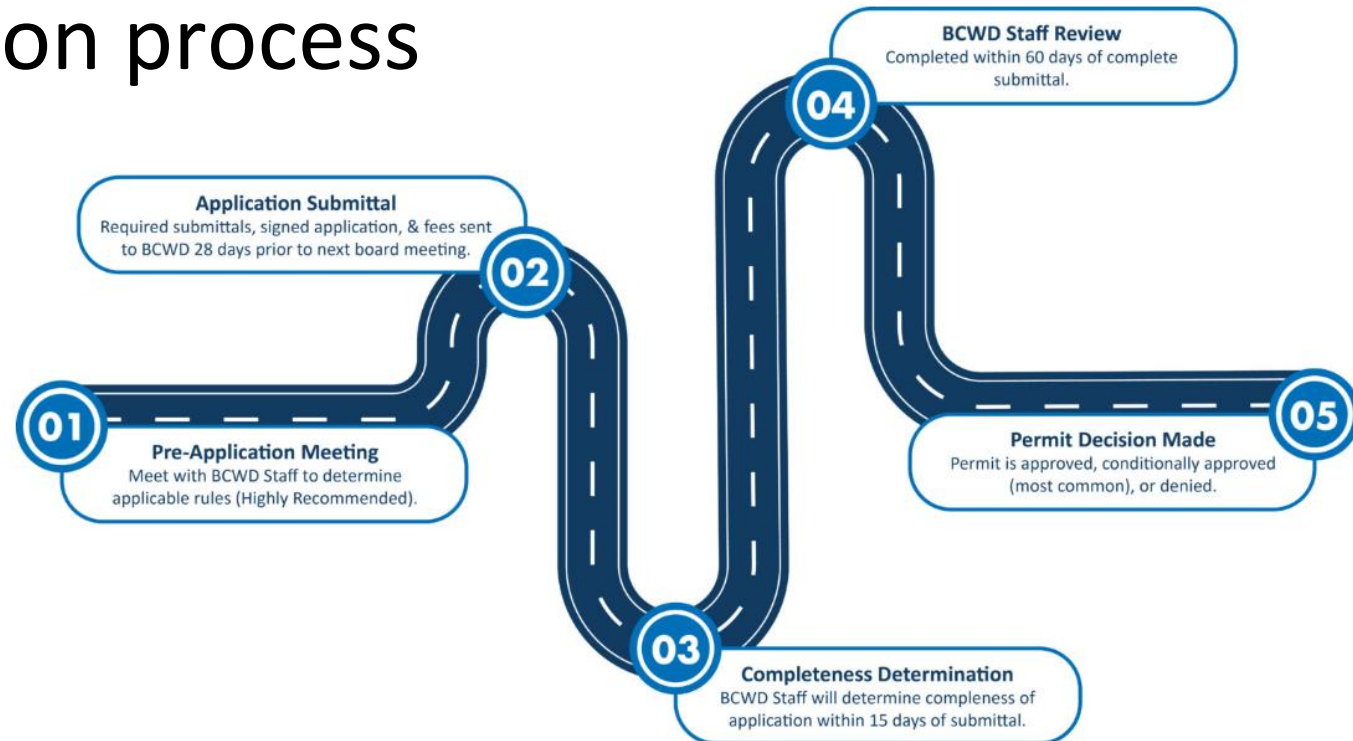


Consider During WMP Process & Rules Revision

- Review permit fee structure to ensure they are clearly communicated and equitable

Staff Will Explore & Prepare for Rules Revision

- Prepare for future rules revision
- Begin rule revision process



Request Additional Information from Partners & Consider During WMP Process

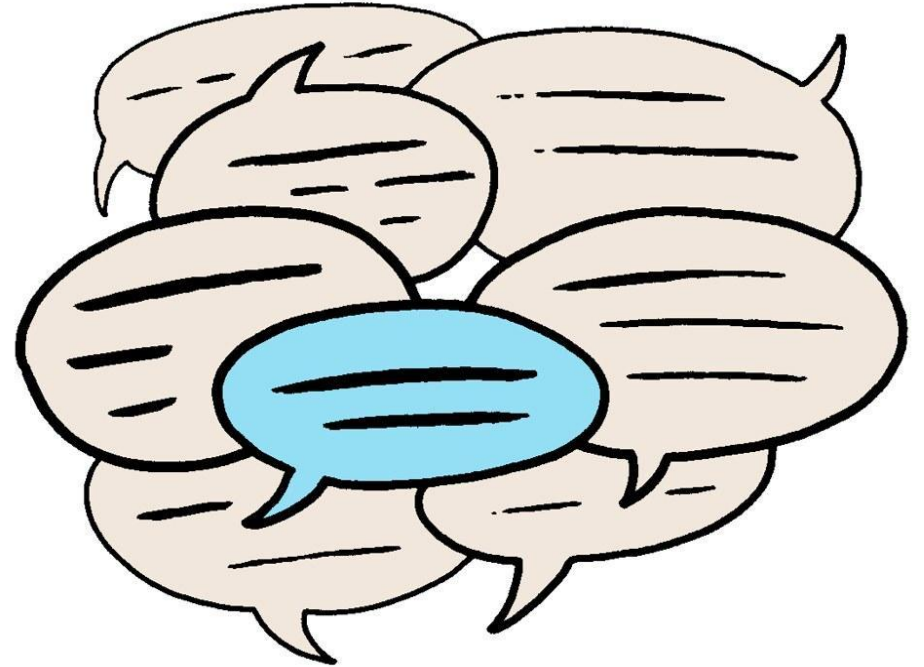
Host ongoing engineering workshops
/ meetings

Increase outreach opportunities

Committee membership

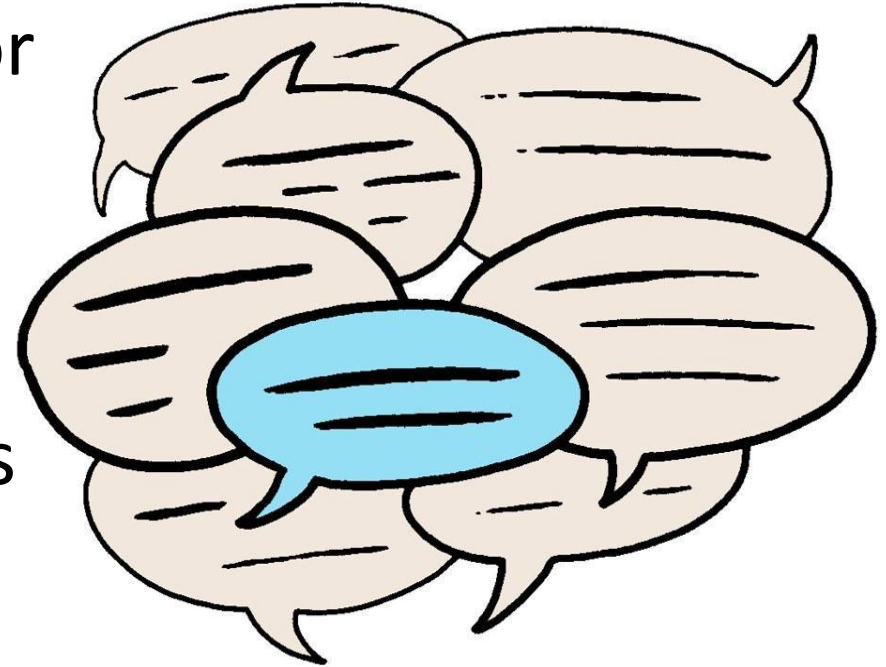
Host Ongoing Engineering Workshops / Meetings

- Is there value in this?
- Do the partners support it?
- Someone has to pay for engineers to attend; would the partners support sending their engineers?



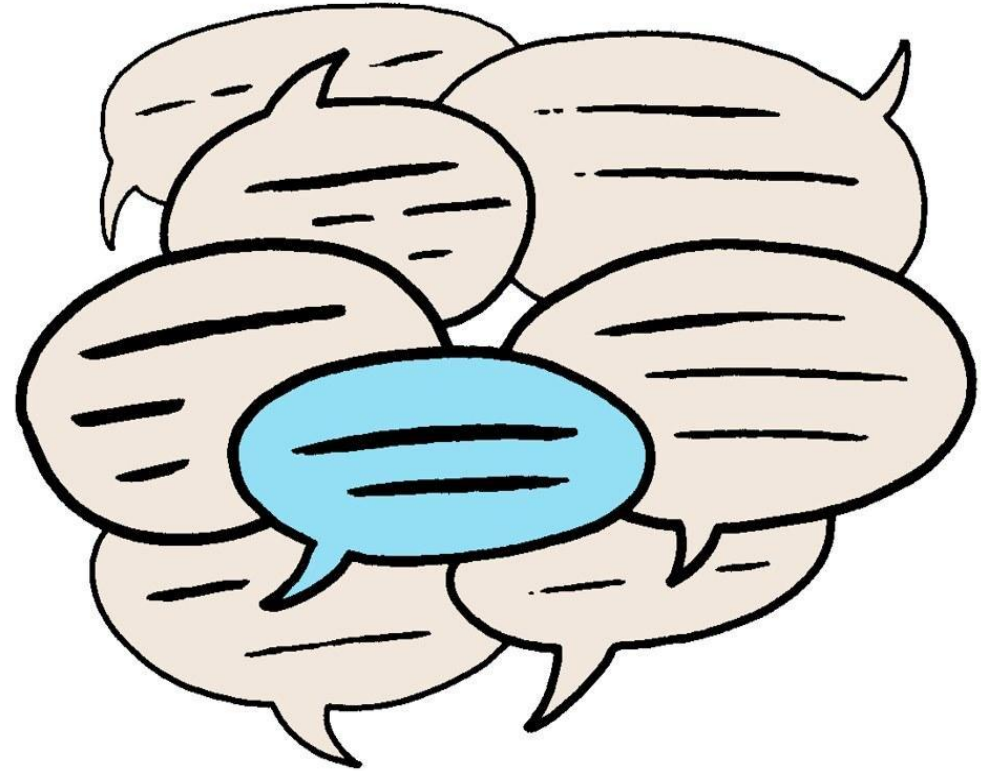
Increase Outreach Opportunities

- Information cards or standard language for other LGUs
- Schedule consistent meetings with partners
- Opportunities for developers / contractors to meet staff
 - Lunch & learns
 - Virtual lessons
 - Breakfasts



Committee Membership

- What kind of involvement are you looking for?
- Would you be willing and interested in participating?
- What would you be willing to do?



Thank You!

Karen Kill

BCWD District Administrator

kill@mnwcd.org

Beth Carreno

