



BROWN'S CREEK
WATERSHED DISTRICT

Introduction to the Watershed

August 2025



District Staff



Karen Kill,
Administrator



Hannah Peterson,
Communications & Project Assistant



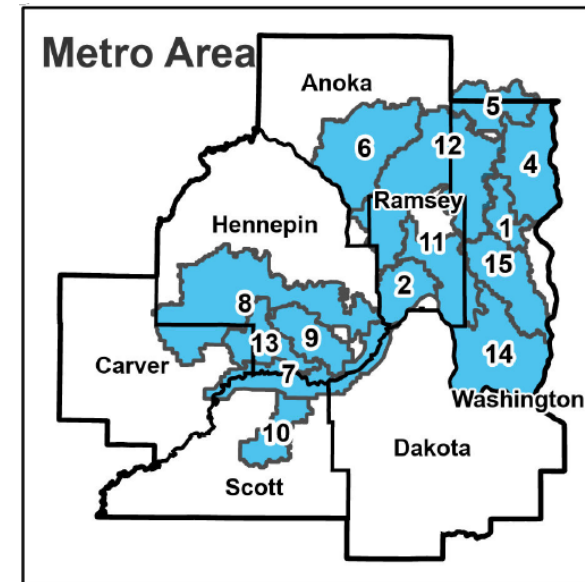
What is a Watershed?

A watershed is an area of land that captures water in any form, such as rain, snow, or dew, and drains it to a particular stream, river, or lake. All land is part of the watershed for some creek, stream, river, or lake.



What is a Watershed District?

- A **local unit of government** created under MN Statute, **based on watershed boundaries**, and managed by a county appointed **board of managers**
- Purpose to **conserve the natural resources** of the state by **land use planning, flood control, and conservation projects** by using sound scientific principles for the protection of the **public health and welfare** and the provident use of the natural resources

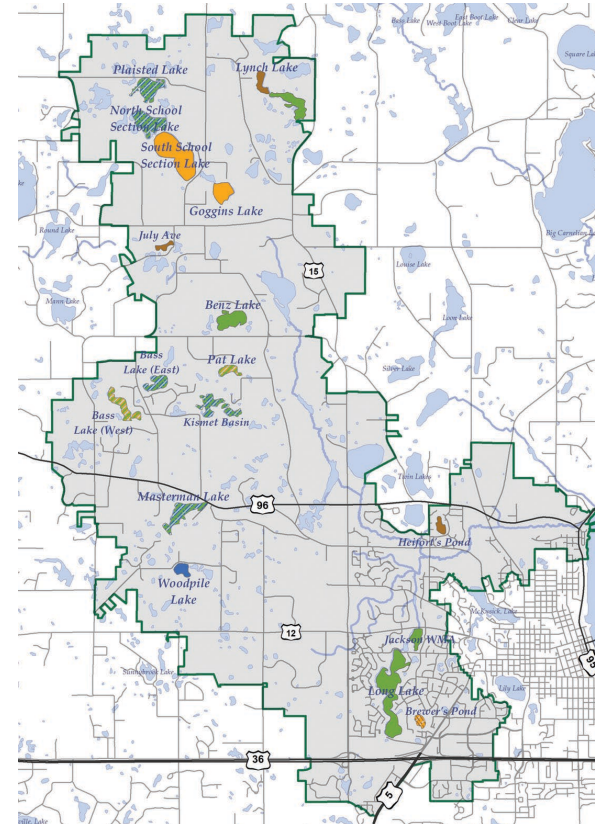


Metro Watershed Districts	
ID	NAME
1	BROWNS CREEK
2	CAPITOL REGION
4	CARNELIAN-MARINE-ST. CROIX
5	COMFORT LAKE FOREST LAKE
6	COON CREEK
7	LOWER MINNESOTA RIVER
8	MINNEHAHA CREEK
9	NINE MILE CREEK
10	PRIOR LAKE-SPRING LAKE
11	RAMSEY-WASHINGTON METRO
12	RICE CREEK
13	RILEY-PURGATORY-BLUFF CREEK
14	SOUTH WASHINGTON
15	VALLEY BRANCH



What Does BCWD Include?

- A few rare and unique ecosystems including **Brown's Creek**, a cold-water trout stream, and **lakes, ponds, and wetlands** that support a variety of plants and animals.
- Parts of Stillwater, Oak Park Heights, Lake Elmo, Grant, Hugo, Stillwater Township, and May Township.



Our Mission

- Work with the community to:
 - Preserve and improve the quality of the District's water and natural resources
 - Educate residents about the value of this ecosystem and advise residents of their potential impacts on the functions and values of the District's water and natural resources
 - Find and implement acceptable solutions to water-related issues
 - Assure that the integrity of the watershed is preserved for future generations



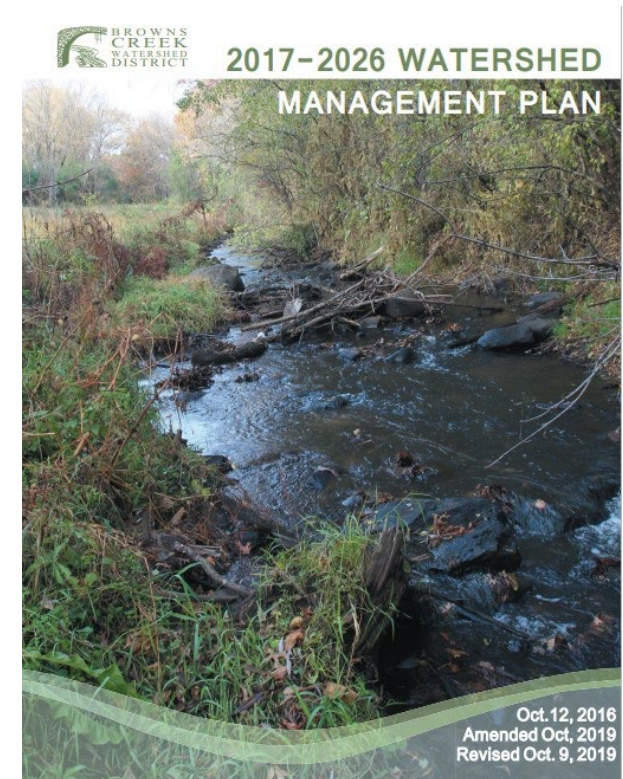
Our Vision

The Brown's Creek Watershed District consists of communities interlaced with natural corridors. These natural corridors improve the function and value of the district's water resources and support a diverse population of plants, wildlife, and fish. The district brings people and the environment together to accommodate development that preserves the connection between surface water and groundwater and enhances the quality of these resources.



Watershed Management Plan

- Watershed districts are guided by a 10-year management plan which outlines their program and project priorities and goals.
- BCWD's next plan is in progress, and will be adopted in 2026



Our Programs

- **Stewardship Grants**

- Reimburse residents for water quality improvement projects

- **Permitting**

- Ensure new construction is protecting water resources

- **Capital Improvement Projects**

- Create larger-scale water quality/quantity improvements

- **Water Quality Monitoring**

- Monitor the creek and lakes for water quality indicators

- **Education and Outreach/Events**

- Annual Community Celebration, as well as tours, meetings, and workshops
- Teach the community about the watershed and how to protect water resources



How to Help

- Volunteer:
 - Apply to join our Citizen's Advisory Committee
 - Attend a planting event
- Share photos and stories
- Respect the nature around you and encourage others to do the same
- Donate to environmental organizations



Thank You!

Reach out to kkill@mnwcd.org or hpetererson@mnwcd.org with any questions!



BROWN'S CREEK WATERSHED DISTRICT

Preserving the integrity of the watershed for future generations

www.bcwd.org | 455 Hayward Ave N, Oakdale, MN 55128 | 651-330-8220