

**Project Name** | Multiple Projects: Vegetative Maintenance**Date** | 3/23/2026**To / Contact info** | BCWD Board of Managers**Cc / Contact info** | Karen Kill, District Administrator**From / Contact info** | John Sarafolean; Mike Majeski**Regarding** | 2026 Vegetative Maintenance Scope of Services

## Background

Brown's Creek WD has committed to doing maintenance on vegetation at a number of sites throughout the watershed. The maintenance is conducted to preserve existing high value naturally occurring native vegetation (as is the case for the Grant Fen), to assist in the establishment of native vegetation of recently constructed projects (Brown's Creek Tributary Restoration, Brown's Creek Trail, Long Lake Shoreline, Morgan Ave. Sand Filter), or to control invasive and woody vegetation that has sprouted up at previously constructed project sites (THPP and Kismet Basin).

## Scope of Services

In 2025, EOR's conservation biologist Mike Majeski conducted vegetation management inspections to check in on the BCWD CIP project sites. These site visits were conducted to verify the status of the invasive plant communities and to identify any additional invasive plant species removal opportunities. Additional invasive plant species removal opportunities were identified at three of the BCWD CIP project sites; Grant Fen, Kismet Basin, and Long Lake Shoreline Buffer. The additional opportunities include general invasive and undesirable woody removals. The project estimate also includes adding the Brown's Creek Tributaries Restoration Project to the list of vegetation maintenance sites. The following summarizes the work proposed at each project site for 2026. The maintenance work will be conducted by Natural Shores Technologies. Refer to attached map for site locations.

### Grant Fen 2026 Maintenance Estimate

*Monitoring has been conducted at this site since: 2010*

#### Spring Mowing

4 Maintenance visits throughout the season including:

- Spring Mowing
- Spot herbicide treatments of reed canary grass, thistle, and other non-native weeds
- Regular weed whipping or mowing to prevent weeds from going to seed
- Re-seeding areas with on-site seed sources
- Buckthorn or other undesirable tree removal (ex. Amur maple)

### Grant Fen 2026 Woody Treatment Estimate

*Monitoring has been conducted at this site since: 2010*

#### Invasive Woody Treatment

- Cut and treat buckthorn, amur maple, honeysuckle, and other non-native invasive species with a stump mix herbicide
- Buck up cut woodies and leave on site
- Conducted fall and winter of 2026
- Priority given to western edge followed by north side, south side, and east side (boundaries shown in figure below)

### **Long Lake Shoreline 2026 Woody Removal**

*Monitoring has been conducted at this site since: 2015*

2-3 Maintenance visits throughout season including:

- Buckthorn, Amur maple, and other non-native species cut and treated with stump mix herbicide. To be conducted fall or winter 2026.
- Woodies will be cut, bucked up, and left on site. Removal will start to the north and continue along the shoreline to the south until the budget is reached.
- 1 spot mowing in current vegetation management area mid-season to prevent seed maturation of species such as reed canary grass and Canada thistle.

### **Brown's Creek Trail 2026 Maintenance**

*Monitoring has been conducted at this site since: 2015*

Spring Mowing

4 Maintenance visits throughout season including:

- Spot herbicide treatments of reed canary grass, thistle, sweet clover, and other non-native weeds
- Regular weed whipping or mowing to prevent weeds from going to seed
- Re-seed or re-plant areas where weeds have been removed
- Cut, treat, and buck up black locust found on the eastern restoration boundary

### **Kismet Basin 2026 Maintenance**

*Monitoring has been conducted at this site since construction in 2002, under this contract since 2019*

Spring Mowing

3-4 Maintenance visits throughout the season including:

- Spring and fall spot herbicide treatments of reed canary grass, spotted knapweed, and other invasive weeds
- Regular weed whipping or mowing to prevent weeds from going to seed

### **Kismet Basin 2026 Woody Removal**

Invasive woody treatment

- Cut and treat buckthorn, black locust, amur maple, honeysuckle, and other non-native invasive species with a stump mix herbicide
- Remove cut debris from site
- Conducted fall and winter of 2026

**THPP 2026 Maintenance**

*Monitoring has been conducted at this site since construction was completed in 2001, under this contract since 2019*

4 Maintenance visits throughout the season including:

- Spring and fall spot herbicide treatments of reed canary grass, purple loosestrife, Canada thistle, and other invasive weed species
- Regular weed whipping or mowing to prevent weeds from going to seed (focusing on Canada thistle, spotted knapweed, birdsfoot trefoil, common burdock, reed canary grass, and other scattered patches of non-natives species)
- Volunteer woody management- herbicide foliar spray or cut stump application of boxelder and amur maple, especially in areas where previous woody treatments have been conducted.

**Morgan Ave. Iron Enhanced Sand Filter 2025 Maintenance**

*Monitoring has been conducted at this site since: 2017*

Spring Mowing

4 Maintenance visits throughout the season including:

- 2 herbicide treatments (minimum)
- Prevention of seed maturation by hand pulling or weed whipping (Priority going to Canada thistle, spotted knapweed, crown vetch, and birdsfoot trefoil)
- Removal of volunteer tree species including bristly locust, common buckthorn, glossy buckthorn, and amur maple.

**Brown's Creek Tributary Restoration**

*Construction was completed in 2022. 2026 will be the first year of maintenance.*

Spring Mowing

4 Maintenance visits throughout the season including:

- Spring and fall spot herbicide treatments of reed canary grass, spotted knapweed, and other
- 2 spring and fall herbicide treatments
- Prevention of seed maturation by selective mowings
- Removal of volunteer tree species including fall foliar treatment of small buckthorn saplings

**Site Progress Reports**

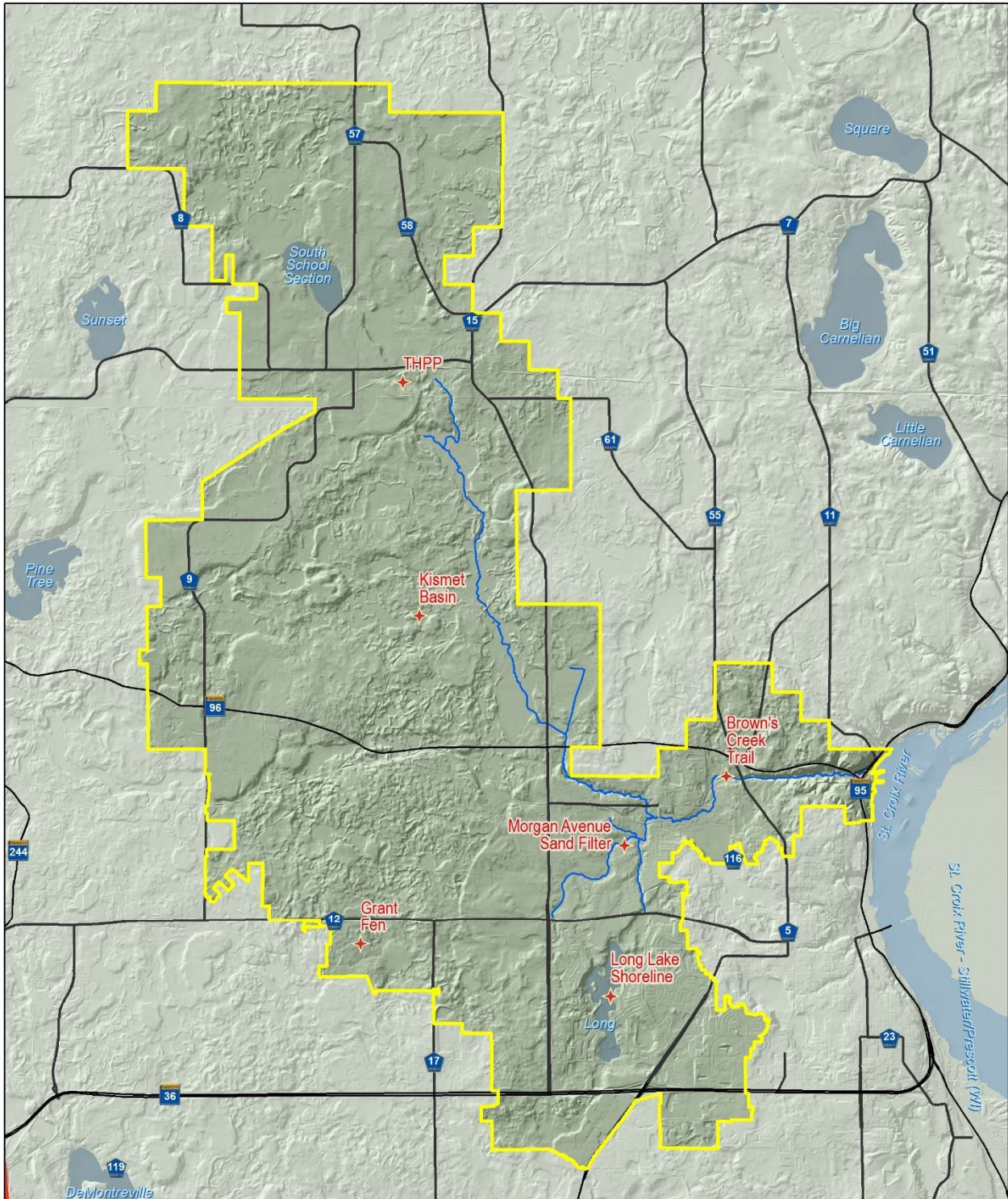
Detailed progress reports for each site will be completed following the maintenance season. Reports will summarize work done during 2026, progress being made toward restoration goals and maintenance recommendations for 2027.

**Requested Action**

Authorize the vegetative maintenance scope not to exceed \$41,887 (as described in the table below) with Emmons and Olivier Resource, including \$41,387 as a subcontract with Natural Shores Technology.

<b>Tasks</b>	<b>Estimated Cost</b>	<b>Account Number</b>
Grant Fen	\$3,470*	948-0000
Grant Fen Woody Removal	\$12,672	948-0000
Long Lake Shoreline Woody Removal	\$3,080	948-0000
Brown's Creek Trail	\$2,100	948-0000
Kismet Basin	\$2,530	948-0000
Kismet Basin Woody Removal	\$2,000	948-0000
Trout Habitat Preservation Project	\$4,620	948-0000
Morgan Avenue Sand Filter	\$2,250	948-0000
Brown's Creek Tributary Restoration	\$8,000	948-0000
Site Progress Reports	\$1,165	953-0000
<b>TOTALS</b>	<b>\$41,887</b>	

*\* Includes \$500 contractor coordination time and reporting*



Legend	
	Jurisdiction 2017
	Site
	Lake, Pond or Reservoir
	River or Stream (polygon)

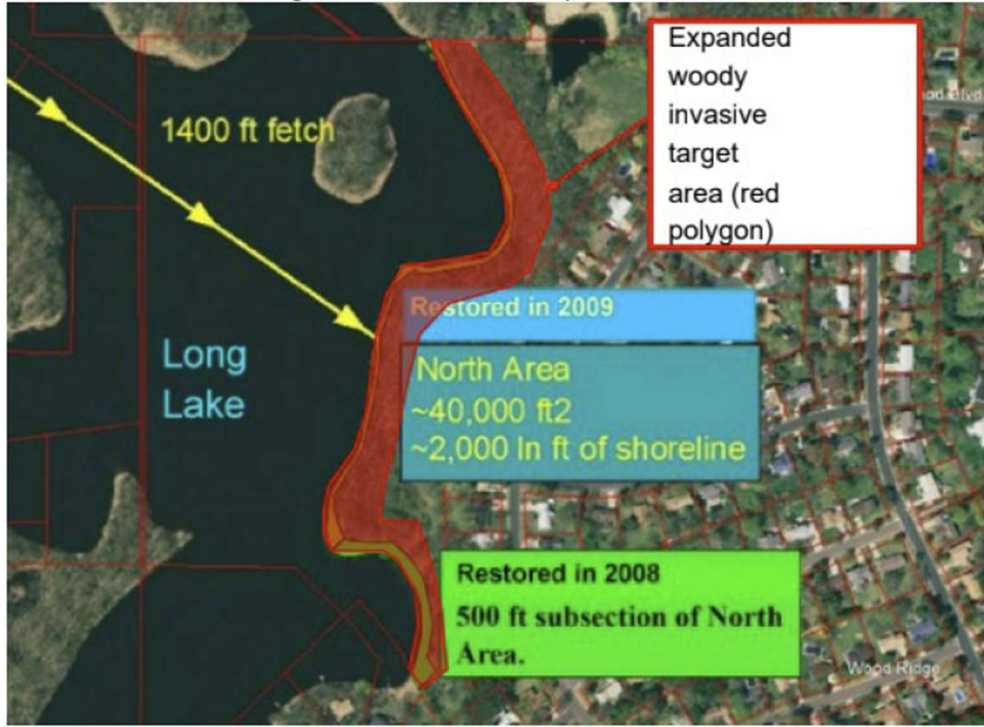


**BCWD  
Vegetation  
Maintenance Site**

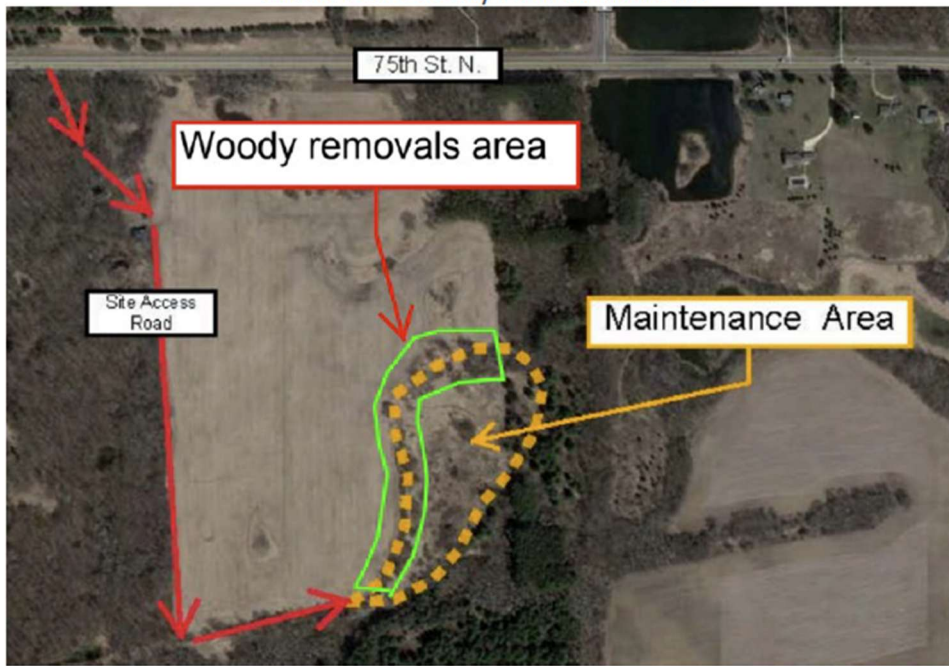
Emmons & Olivier Resources, Inc. is an Equal Opportunity Affirmative Action Employer

**Added 2026 Woody Removal Sites**

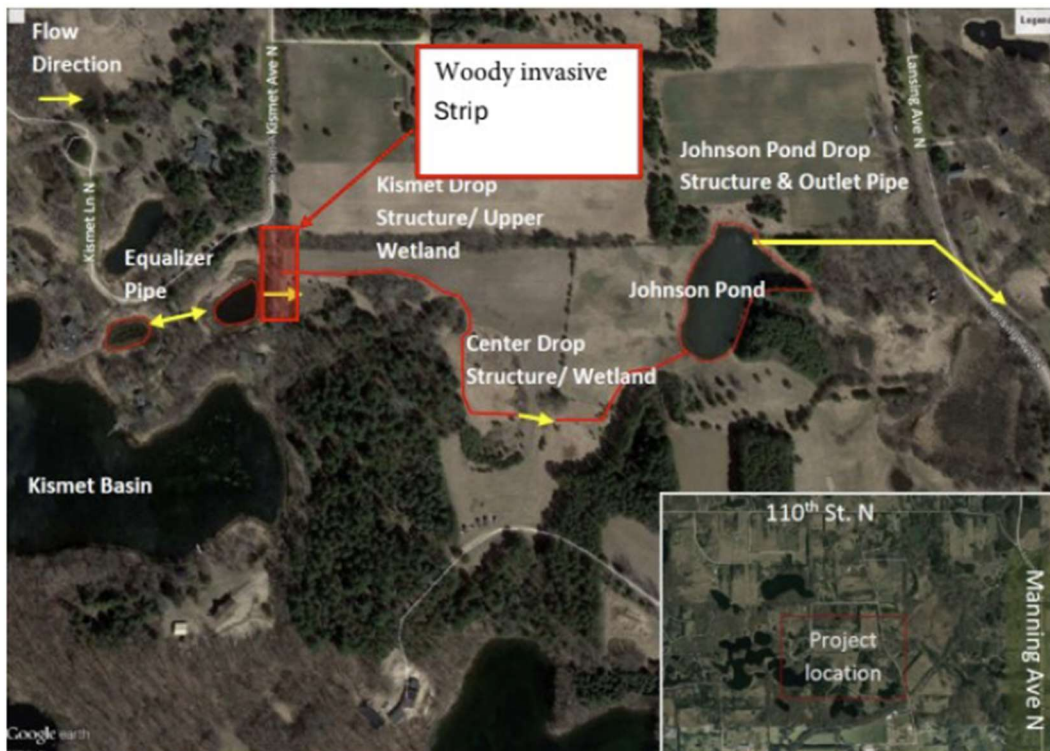
Long Lake Shoreline Woody Removal Area:



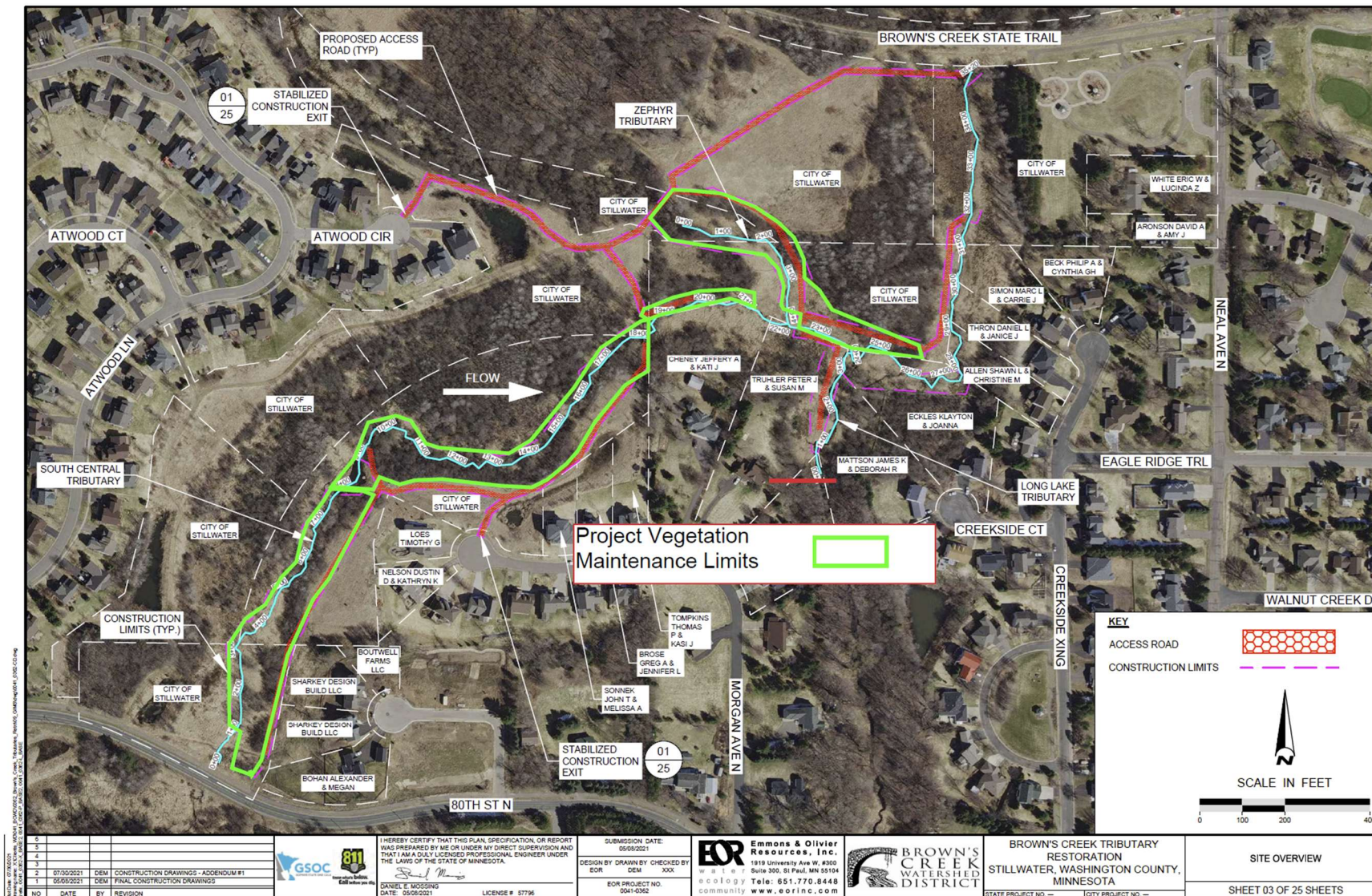
Grant Fen Woody Removal Areas:



Kismet Basin Woody Removal Area:



**Brown's Creek Tributaries New Site:**



Emmons & Olivier Resources, Inc. is an Equal Opportunity Affirmative Action Employer